



SOUTH VALLEY WATER RECLAMATION FACILITY

WEST JORDAN, UTAH

2022 VFD REPLACEMENT PROJECT

CLIENT PROJECT NO. 201238

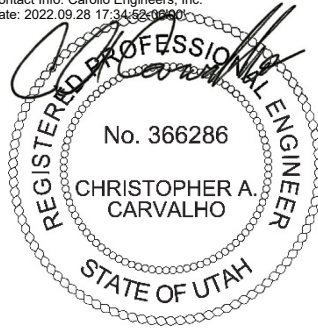
ADDENDUM NO. 1

TO THE

PROCUREMENT SUBMITTAL

SEPTEMBER 28, 2022

Digitally signed by Christopher Alan Carvalho
Contact Info: Carollo Engineers, Inc.
Date: 2022.09.28 17:34:52-0600



Bidders on the above-named project are hereby notified that the Bidding Documents are modified as indicated below. Bidders are required to acknowledge receipt of this Addendum in the space provided on the Document 00416 - Bid Form.

This Addendum shall become part of the Contract and provisions of the Contract apply.

SPECIFICATIONS

The following specifications are modified as indicated below.

1. No changes.

DRAWINGS

The following drawings are modified as indicated below.

The following drawings are replaced with attached revisions. The only change to these drawings is addition of the Engineer's signature:

1. G01.
2. GE01.
3. GE02.
4. GE-OL-HW-01.
5. GE-OL-RW-01.
6. GE-OL-RW-02.
7. GE-OL-RW-03.
8. GE-OL-RW-04.
9. GE-OL-RW-05.
10. GE-OL-RW-06.
11. 1E-01.
12. 14E-02.
13. 17E-02.
14. GN05.
15. PI-0001.
16. IS-01.
17. IS-02.
18. IS-03.

The following drawings are replaced with attached revisions as indicated below:

1. G02.
2. G03.

3. GE-OL-HW-02.
4. GE-OL-HW-03.

The following drawing are added with the attached as indicated below.

1. GE-OL-HW-05.
2. GE-OL-HW-06.
3. GE-OL-HW-07.
4. GE-OL-SP-01.
5. GE-OL-SP-02.
6. GE-OL-SP-03.
7. GE-OL-SP-04.
8. 10E-01.
9. IS-04.

1	2	3	4	5	6	7	8	9	10	11	12	13			
A													A		
B													B		
C													C		
D													D		
E													E		
F													F		
G													G		
<div><div>1</div><div>REV</div></div>				<div>9-28-22</div> <div>DATE</div>	<div>CAC</div> <div>BY</div>	<div>ADDENDUM NO. 1</div> <div>DESCRIPTION</div>	<div>DESIGNED TLM</div> <div>DRAWN TLM</div> <div>CHECKED CLL</div> <div>DATE SEPTEMBER 2022</div>	<div><div>Digitally signed by Christopher A. Carvalho Contact Info: 801-222-2222 Date: 2022.09.28 10:00:00 -0700</div><div><div>REGISTERED PROFESSIONAL ENGINEER</div><div>No. 366296</div><div>CHRISTOPHER A. CARVALHO</div><div>STATE OF UTAH</div></div></div>			<div><div><div><div></div><div>carollo</div></div></div></div>	<div><div><div>SV</div><div>South Valley</div><div>WATER RECLAMATION FACILITY</div><div>7495 South 1300 West</div><div>West Jordan, Utah 84084</div></div></div>	<div>SOUTH VALLEY WATER RECLAMATION</div> <div>2022 VFD REPLACEMENT</div> <div>GENERAL</div> <div>COVER SHEET</div>	<div>VERIFY SCALES</div> <div>BAR IS ONE INCH ON ORIGINAL DRAWING</div> <div>0 1"</div> <div>IF NOT ONE INCH ON THIS SHEET, ADJUST SCALES ACCORDINGLY</div>	<div>JOB NO. 201238</div> <div>DRAWING NO. G01</div> <div>SHEET NO. SHT OF</div>
PROJECT NO.				FILE NAME: 00G01.dwg											

South Valley Water Reclamation Facility

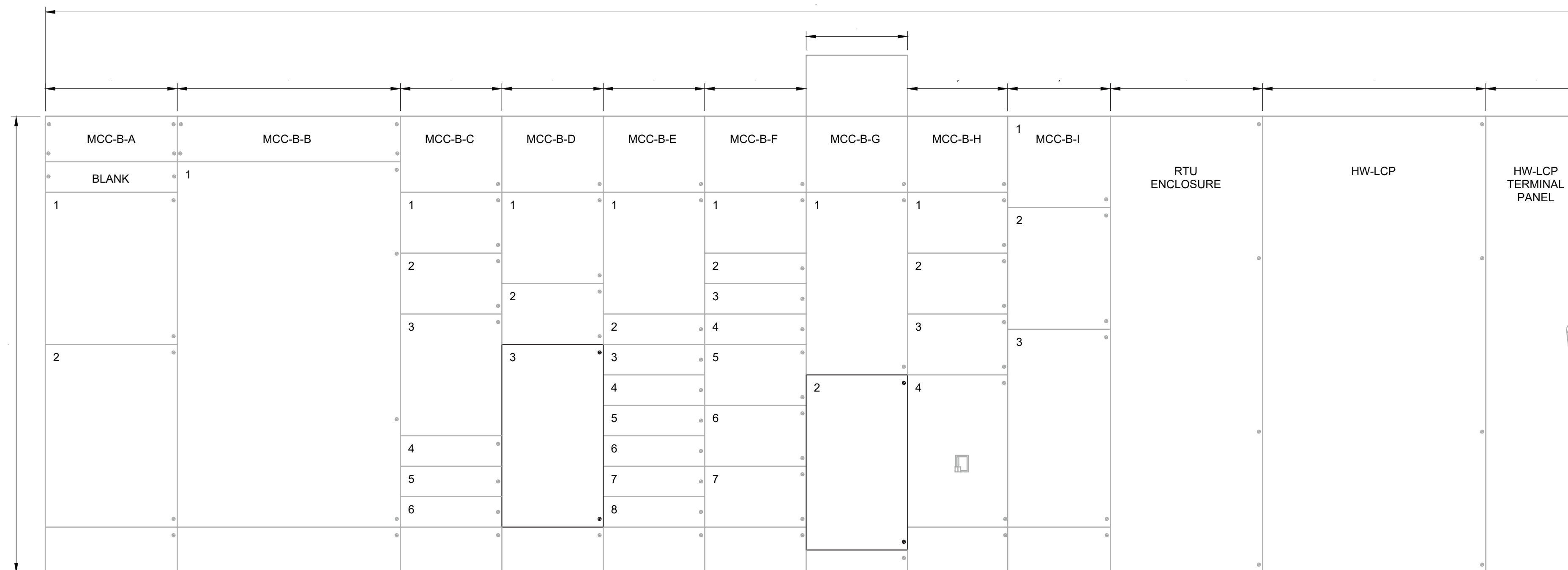
Drawings for the Construction of

2022 VFD REPLACEMENT PROJECT

September 2022
VOLUME 2

VFD PROCUREMENT PACKAGE

ABBREVIATIONS													POWER DEVICE FUNCTION NUMBERS												
A	A	AMP	J	JUNCTION BOX	TACH	TACHOMETER	1	MASTER ELEMENT	83	AUTOMATIC SELECTIVE CONTROL OR TRANSFER RELAY	A														
	ABS	ABSOLUTE			TB - X	TERMINAL BLOCK - UNIT X	2	TIME-DELAY STARTING OR CLOSING RELAY	84	OPERATING MECHANISM															
	AC	ALTERNATING CURRENT	K	KEY INTERLOCK	TC	THERMOCOUPLE / TIME CLOCK / TRAY CABLE	3	CHECKING OR INTERLOCKING RELAY	85	PILOT COMMUNICATIONS, CARRIER OR PILOT-WIRE RELAY															
	ACK	ACKNOWLEDGE	KA	KILOAMP	TD	TEMPERATURE DETECTOR RELAY	4	MASTER CONTACTOR	86	LOCKOUT RELAY															
	ACTR	ACTUATOR	KV	KILOVOLT	TE	TOTALLY ENCLOSED	5	STOPPING DEVICE	87	DIFFERENTIAL PROTECTIVE RELAY															
	AF	AMP FRAME	KVA	KILOVOLT AMPERE	TEFC	TOTALLY ENCLOSED FAN COOLED	6	STARTING CIRCUIT BREAKER	88	AUXILIARY MOTOR OR MOTOR GENERATOR															
	AFC	AUTOMATIC FREQUENCY CONTROL	KVAR	KILOVAR (REACTANCE)	TENV	TOTALLY ENCLOSED NON-VENTILATED	7	ANODE CIRCUIT BREAKER	89	LINE SWITCH															
	AIC	AMP INTERRUPTING CAPACITY	KW	KILOWATT	TERM	TERMINAL	8	CONTROL POWER DISCONNECTING DEVICE	90	REGULATING DEVICE															
	AM	AMMETER	KWD	KILOWATT DEMAND	TJB	TERMINAL JUNCTION BOX	9	REVERSING DEVICE	91	VOLTAGE DIRECTIONAL RELAY															
	ANN	ANNUNCIATOR	KWH	KILOWATT HOUR	TM	THERMAL MAGNETIC	10	UNIT SEQUENCE SWITCH	92	VOLTAGE AND POWER DIRECTIONAL RELAY															
B	ANT	ANTENNA			TP	TWISTED PAIR	11	MULTIFUNCTION DEVICE	93	FIELD-CHANGING CONTACTOR	B														
	APU	AUXILIARY POWER UNIT	L	LONG-TIME	TS	TEMPERATURE SWITCH	12	OVER-SPEED DEVICE	94	TRIPPING OR TRIP-FREE RELAY															
	ARM	ARMORED CABLE	L-B	LINE-BUS	TS1W	TWO SPEED CONSEQUENT POLE, ONE WINDING	13	SYNCHRONOUS-SPEED DEVICE																	
	AS	AMMETER SWITCH	L-G	LINE-GROUND	TS2W	TWO SPEED SEPARATE WINDING	14	UNDER-SPEED DEVICE																	
	ASYM	ASYMMETRICAL	LA	LIGHTNING ARRESTOR	TSTAT	THERMOSTAT	15	SPEED OR FREQUENCY MATCHING DEVICE																	
	AT	AMP TRIP	LBL	LABEL			16	DATA COMMUNICATIONS DEVICE																	
	ATO	AUTOMATIC THROW OVER	LC	LIGHTING CONTACT OR	UHF	ULTRA HIGH FREQUENCY	17	SHUNTING OR DISCHARGE SWITCH																	
	ATP	AMMETER TEST POINT	LCP- X	LOCAL CONTROL PANEL NO. X	UNG	UNGROUND	18	ACCELERATING OR DECELERATING DEVICE																	
	ATS	AUTOMATIC TRANSFER SWITCH	LL	LEAD-LAG LOAD REACTOR	UPS	UNINTERRUPTIBLE POWER SUPPLY	19	STARTING-TO-RUNNING TRANSITION CONTACTOR																	
	AUTO XFMR	AUTOMATIC TRANSFORMER	LP	LIGHT POLE	UVR	UNDER VOLTAGE RELAY	20	ELECTRICALLY OPERATED VALVE																	
C	AUX	AUXILIARY	LP - X	LIGHTING PANEL NO. X			21	DISTANCE RELAY			C														
	AWG	AMERICAN WIRE GAGE	LTG	LIGHTING	V	VOLT	22	EQUALIZER CIRCUIT BREAKER																	
			LV	LOW VOLTAGE	VA	VOLT AMPERE	23	TEMPERATURE CONTROL DEVICE	GS	GROUND FAULT PROTECTION (RELAY CT IN A SYSTEM NEUTRAL CIRCUIT OR GENERATOR PROTECTION)															
	B	BELL	LVL	LEVEL	VAR	VARMETER	24	VOLTS PER HERTZ RELAY	L	LINE PROTECTION (RELAY CT IN TOROIDAL OR GROUND SENSOR TYPE)															
	BAT	BATTERY			VCP	VENDOR CONTROL PANEL	25	SYNCHRONIZING OR SYNCHRONISM-CHECK DEVICE	M	MOTOR PROTECTION															
	BFG	BELOW FINISHED GRADE	M-X	MOTOR CONTROLLER NO. X	VFD	VARIABLE FREQUENCY DRIVE	26	APPARATUS THERMAL DEVICE	N	GROUND FAULT PROTECTION (RELAY COIL CONNECTED IN RESIDUAL CT CIRCUIT)															
	BHP	BRAKE HORSEPOWER	MA	MILLIAMPERE	VHF	VERY HIGH FREQUENCY	27	UNDERVOLTAGE RELAY	T	TRANSFORMER PROTECTION															
	BKR	BREAKER	MCA	MOTOR CIRCUIT AMPS	VM	VOLTMETER	27N	GROUND FAULT UNDERVOLTAGE RELAY	V	VOLTAGE															
	BRF	BELOW RAISED FLOOR	MCC - X	MOTOR CONTROL CENTER NO. X	VP	VAPORPROOF	28	FLAME DETECTOR	P	PHASE PROTECTION															
			MCP	MOTOR CIRCUIT PROTECTOR	VR	VOLTAGE REGULATOR	29	ISOLATING CONTACTOR																	
D	C	CONDUIT / CONTINUOUS LOAD	MH	MANHOLE / MOUNTING HEIGHT	VS	VOLTAGE SWITCH	30	ANNUNCIATOR RELAY			D														
	CB	CIRCUIT BREAKER	MLO	MAIN LUGS ONLY	VT	VOLTAGE TRANSFORMER	31	SEPARATE EXCITATION DEVICE																	
	CCTV	CLOSED CIRCUIT TELEVISION	MOD	MOTOR OPERATED DAMPER	VTP	VOLTAGE TEST POINT	32	DIRECTIONAL POWER RELAY																	
	CCW	COUNTER CLOCKWISE	MOV	METAL OXIDE VARISTOR			33	POSITION SWITCH																	
	CKT	CIRCUIT	MPR	MOTOR PROTECTION RELAY	W	WATT / WEST	34	MASTER SEQUENCE DEVICE																	
	COAX	COAXIAL CABLE	MS-X	MOTOR STARTER NO. X	WT	WATER TIGHT	35	BRUSH-OPERATING OR SLIP-RING SHORT-CIRCUITING DEVICE																	
	COM	COMMON	MSP	MOTOR STARTING PANEL	WP	WEATHER PROOF	36	POLARITY DEVICE																	
	COMM	COMMUNICATION	MTO	MANUAL THROW OVER			37	UNDERCURRENT OR UNDERPOWER RELAY																	
	CPT	CONTROL POWER TRANSFORMER	MTR-X	MOTOR NO. X	XFMR	TRANSFORMER	38	BEARING PROTECTIVE DEVICE																	
	CR	CONTROLLED RECEPTACLE	MTS	MANUAL TRANSFER SWITCH			39	MECHANICAL CONDITION MONITOR																	
E	CS	CONTROL SWITCH	MV	MEGAVOLT			40	FIELD RELAY			E														
	CT	CURRENT TRANSFORMER	MVA	MEGAVOLT-AMPERES			41	FIELD CIRCUIT BREAKER																	
	CV	CONTROL VALVE	MVS	MEDIUM VOLTAGE SWITCH			42	RUNNING CIRCUIT BREAKER																	
	CW	CLOCKWISE / COOL WHITE	MW	MEGAWATT			43	MANUAL TRANSFER OR SELECTOR DEVICE																	
			N	NEUTRAL			44	UNIT SEQUENCE STARTING RELAY																	
	DC	DIRECT CURRENT	NC	NORMALLY CLOSED			45	ABNORMAL ATMOSPHERIC CONDITION MONITOR																	
	DCS	DISTRIBUTED CONTROL SYSTEM	NEC	NATIONAL ELECTRICAL CODE			46	REVERSE-PHASE OR BALANCE CURRENT RELAY																	
	DCU - X	DISTRIBUTED CONTROL UNIT NO. X	NFC	NONMETALLIC FLEXIBLE CONDUIT			47	PHASE-BALANCE OR PHASE-SEQUENCE VOLTAGE RELAY																	
	DEMO	DEMOLITION	NL	NIGHT LIGHT			48	INCOMPLETE SEQUENCE RELAY																	
	DISC	DISCONNECT SWITCH	NO	NORMALLY OPEN			49	MACHINE OR TRANSFORMER THERMAL RELAY																	
F	DM	DEMAND METER	NP	NAMEPLATE			50	INSTANTANEOUS OVERCURRENT RELAY			F														
	DPDT	DOUBLE POLE DOUBLE THROW					51	AC TIME OVERCURRENT RELAY																	
	DPST	DOUBLE POLE SINGLE THROW					52	AC CIRCUIT BREAKER																	
	DS	DOOR SWITCH	O	OPEN OR OPENED			53	FIELD EXCITATION RELAY																	
			OH	OVERHEAD			54	TURNING GEAR ENGAGING DEVICE																	
	E/G	EMERGENCY GENERATOR	OL	OVERLOAD RELAY			55	POWER FACTOR RELAY																	
	EM	EMERGENCY	P	POLE			56	FIELD APPLICATION RELAY																	
	EMT	ELECTRICAL METALLIC TUBING	PA	PUBLIC ADDRESS			57	SHORT-CIRCUITING OR GROUNDING DEVICE																	
	ENCL	ENCLOSURE	PB	PUSHBUTTON / PULL BOX			58	RECTIFICATION FAILURE RELAY																	
	ENG	ENGINE	PB	PUSHBUTTON / PULL BOX			59	OVERVOLTAGE RELAY																	
G	ENT	ELECTRICAL NON-METALLIC TUBING	PCS	PVC COATED GALVANIZED STEEL CONDUIT			60	VOLTAGE OR CURRENT BALANCE RELAY			G														
	EP	EXPLOSION PROOF	PCM	PROCESS CONTROL MODULE			61	DENSITY SWITCH OR SENSOR																	
	ETM	ELAPSED TIME METER	PE	PHOTOCELL			62	TIME-DELAY STOPPING OR OPENING RELAY																	
			PF	POWER FACTOR			63	PRESSURE SWITCH																	
	F	SUB-FED	PFCC	POWER FACTOR CORRECTION CAPACITOR			64	GROUND DETECTOR RELAY																	
	FA	FIRE ALARM	PFR	PHASE FAILURE RELAY			65	GOVERNOR																	
	FACP	FIRE ALARM CONTROL PANEL	PH	PHASE			66	NOTCHING OR JOGGING DEVICE																	
	FDR	FEEDER	PNL	PANEL			67	AC DIRECTIONAL OVERCURRENT RELAY																	
	FLA	FULL LOAD AMPS	PPX	POWER PANEL NO. X			68	BLOCKING OR OUT OF STEP RELAY																	
	FLX	FLEXIBLE CONDUIT	PRI	PRIMARY			69	PERMISSIVE CONTROL DEVICE																	
NOTES: 1. REFER TO SPECIFICATIONS AND OTHER DRAWINGS FOR ADDITIONAL ABBREVIATIONS.																									
DESIGNED CE				DRAWN CE				CHECKED CLL				DATE SEPTEMBER 2022													
REV				DATE				BY				DESCRIPTION													
1				2				3				4													
PROJECT NO.				FILE NAME: GE02.dwg																					



GENERAL NOTES:

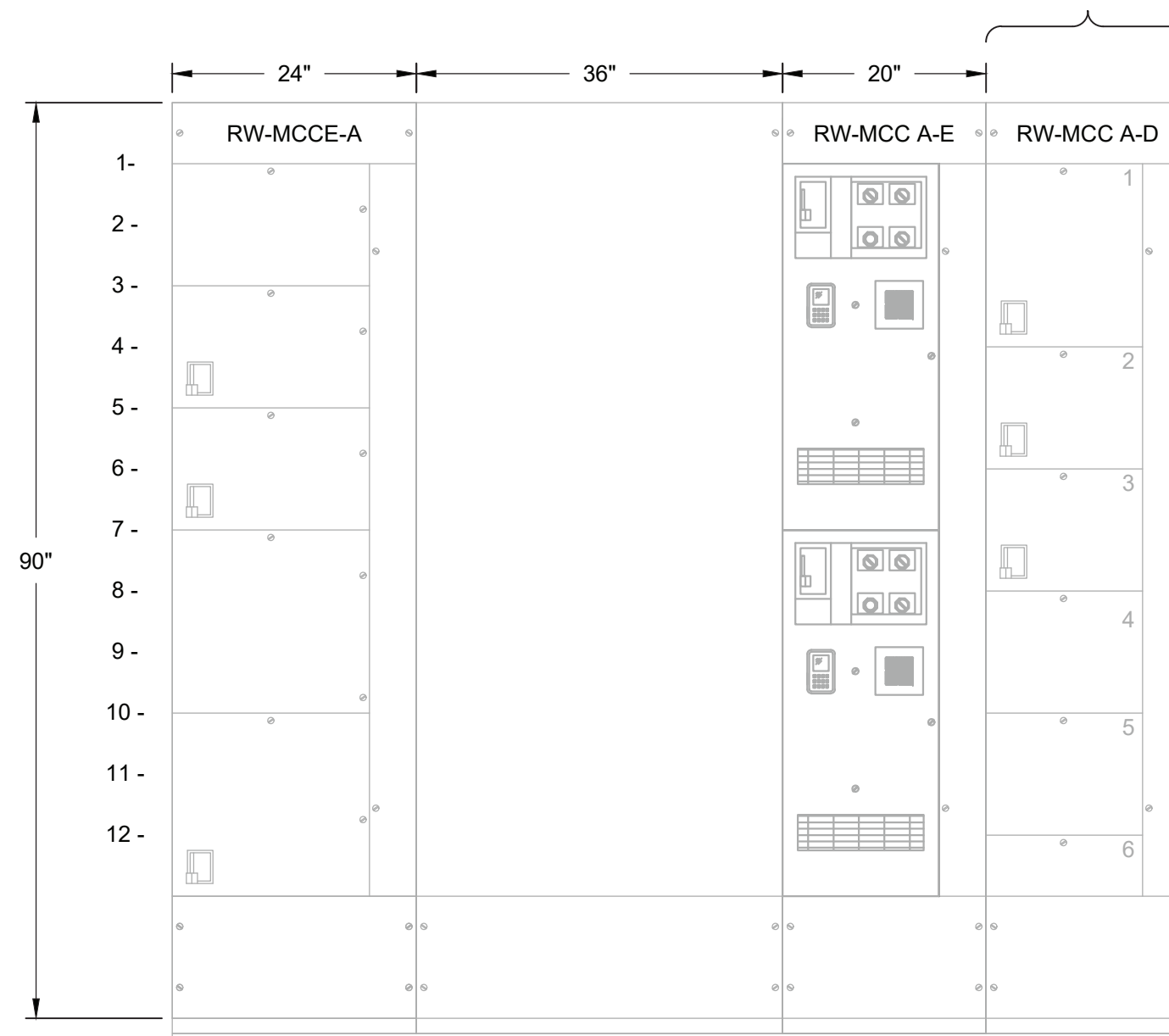
1. ALL MCC MODIFICATIONS ARE BY OTHERS.
2. STANDBY POWER FROM DIESEL GENERATORS IS AVAILABLE TO ALL INFLUENT PUMP VFDS.

HW-MCC B ELEVATION & HW-LCP ELEVATION

SCALE: 3/4" = 1'-0"

A1	-SG-EDB-1	B1	-2000ATS	C1	-HW-P-8 -DEWATERING PUMP	D1	-SPARE	E1	-SPARE	F1	-SPACE	G1	-CONTROL PANEL	H1	-HW-P-101 -SEAL WATER	I1	-SPACE
A2	-ES2-5			C2	-HW-F-1	D2	-HW-F-3 -FAN	E2	-SPARE	F2	-HW-P-9&10 -SUMP PUMPS	G2	-HW-P-3	H2	-HW-P-102 -SEAL WATER	I2	-HW-MCC-C FEEDER
				C3	-SPARE	D3	-HW-P-2	E3	-AIR COMPRESSOR	F3	-SURGE SUPPRESSER			H3	-HW-F-4	I1	-HW-MCC-C -SSCB-100%
				C4	-SPARE			E4	-SPARE	F4	-HW-B-6 -AIR COMPRESSOR			H4	-HW-P-5		
				C5	-ROOF TOP -EVAP COOLER			E5	-PANEL SGB	F5	-HW-F-6 -FAN						
				C6	-SPARE			E6	-HW-ME-19 -BRIDGE CRANE	F6	-HW-P-12 -CIRC. PUMP						
								E7	-O.H. DOOR -POLE LIGHT	F7	-HW-P-11 -CIRC. PUMP						
								E8	-PANEL LP-HW-2								

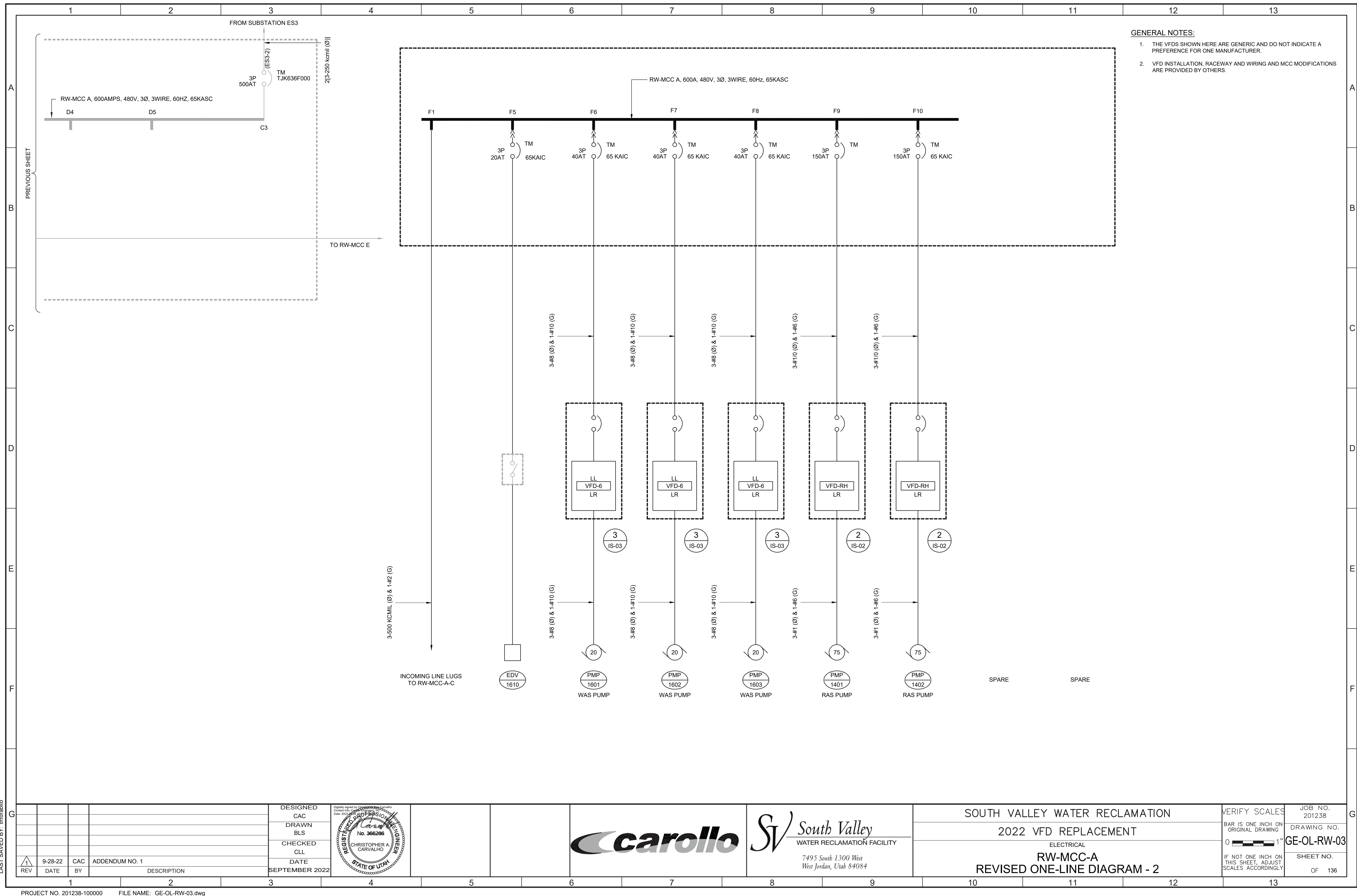
G					DESIGNED CAC	<div><div><div>Digitally signed by Christopher A. Carvalho Contact info: 801-222-1111 Date: 2022.09.28 10:22:22 -0700</div><div></div></div></div>	<div><div></div><div><div><div>SV</div><div>South Valley</div><div>WATER RECLAMATION FACILITY</div></div><div><div>7495 South 1300 West</div><div>West Jordan, Utah 84084</div></div></div></div>	SOUTH VALLEY WATER RECLAMATION		VERIFY SCALES	JOB NO. 201238
					DRAWN BLS			2022 VFD REPLACEMENT		BAR IS ONE INCH ON ORIGINAL DRAWING	DRAWING NO.
					CHECKED CLL			ELECTRICAL		0  1"	GE-OL-HW-01
	<div><div>1</div><div>REV</div></div>	9-28-22	CAC	ADDENDUM NO. 1	DATE SEPTEMBER 2022			HW-MCC-B REVISED ELEVATION		IF NOT ONE INCH ON THIS SHEET, ADJUST SCALES ACCORDINGLY	SHEET NO.
	DATE	BY	DESCRIPTION						OF 136		

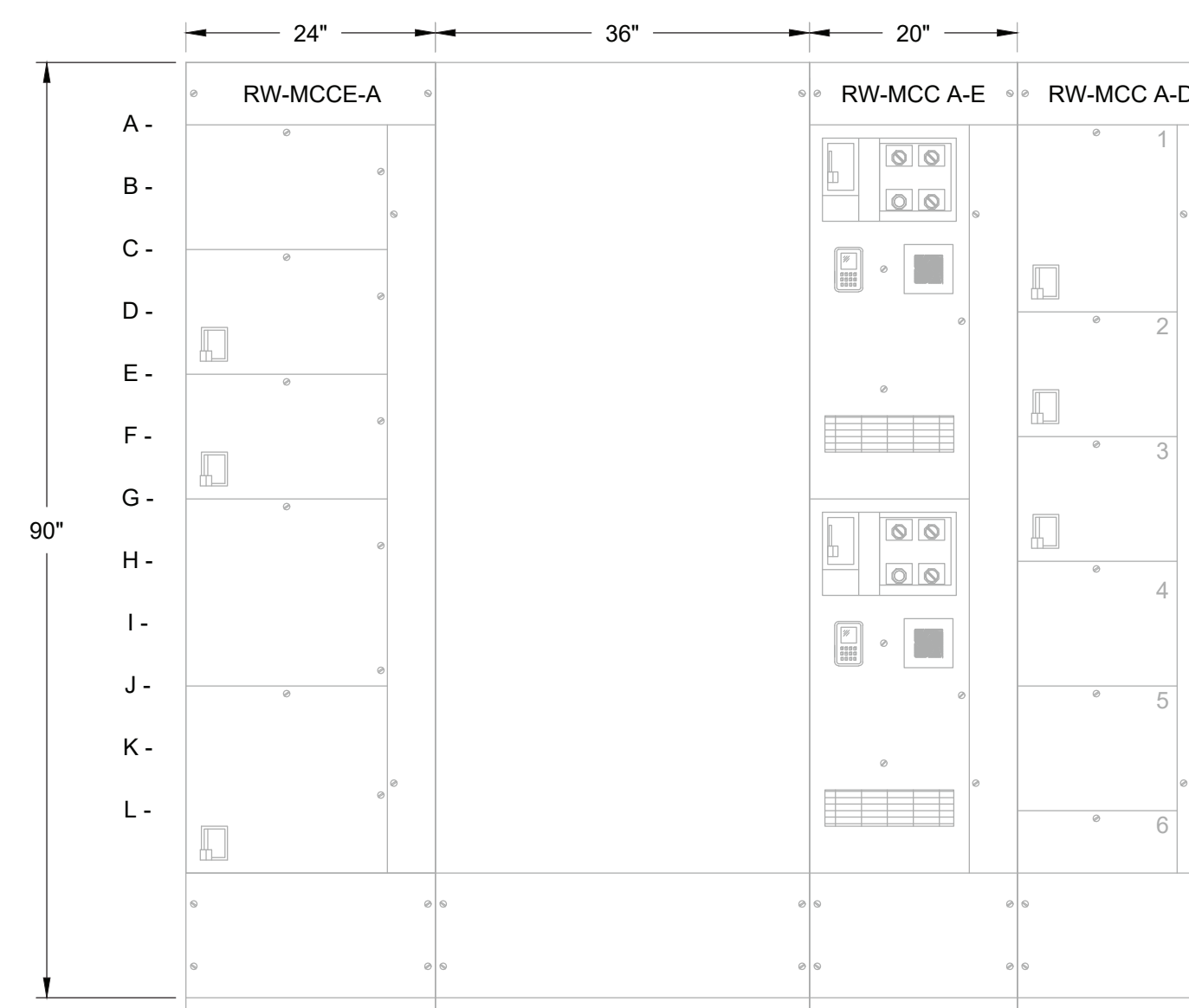


1. THE VFDS SHOWN HERE ARE GENERIC AND DO NOT INDICATE A PREFERENCE FOR ONE MANUFACTURER.
2. VFD INSTALLATION, RACEWAY AND WIRING AND MCC MODIFICATIONS ARE PROVIDED BY OTHERS.

300A VERT. BUS		300A VERT. BUS		600A VERT. BUS	
A1 -	FAN RW-F-1	B1 -	SCUM PUMP RW-MX-1	C1 -	RAS PUMP PMP-1403
A2 -	SCUM PUMP RW-P-10	B2 -	AUTO TRANSFER SWITCH FEEDER	C2 -	RAS PUMP PMP-1402
A3 -	SCUM PUMP RW-P-11	B3 -	AUTO TRANSFER SWITCH RW-ATS	C3 -	MAIN FROM SUBSTATION ES3-2
A4 -	WAS PUMP PMP-1603	B4 -	FROM SG-EDB-5		

E1 -	WAS PUMP PMP-1601	D1 -	SPARE
E2 -	WAS PUMP PMP-1602	D2 -	RAS PUMP PMP-1401
		D3 -	EDV-1610
		D4 -	SPACE
		D5 -	SPACE
		D6 -	INCOMING LINE





GENERAL NOTES:

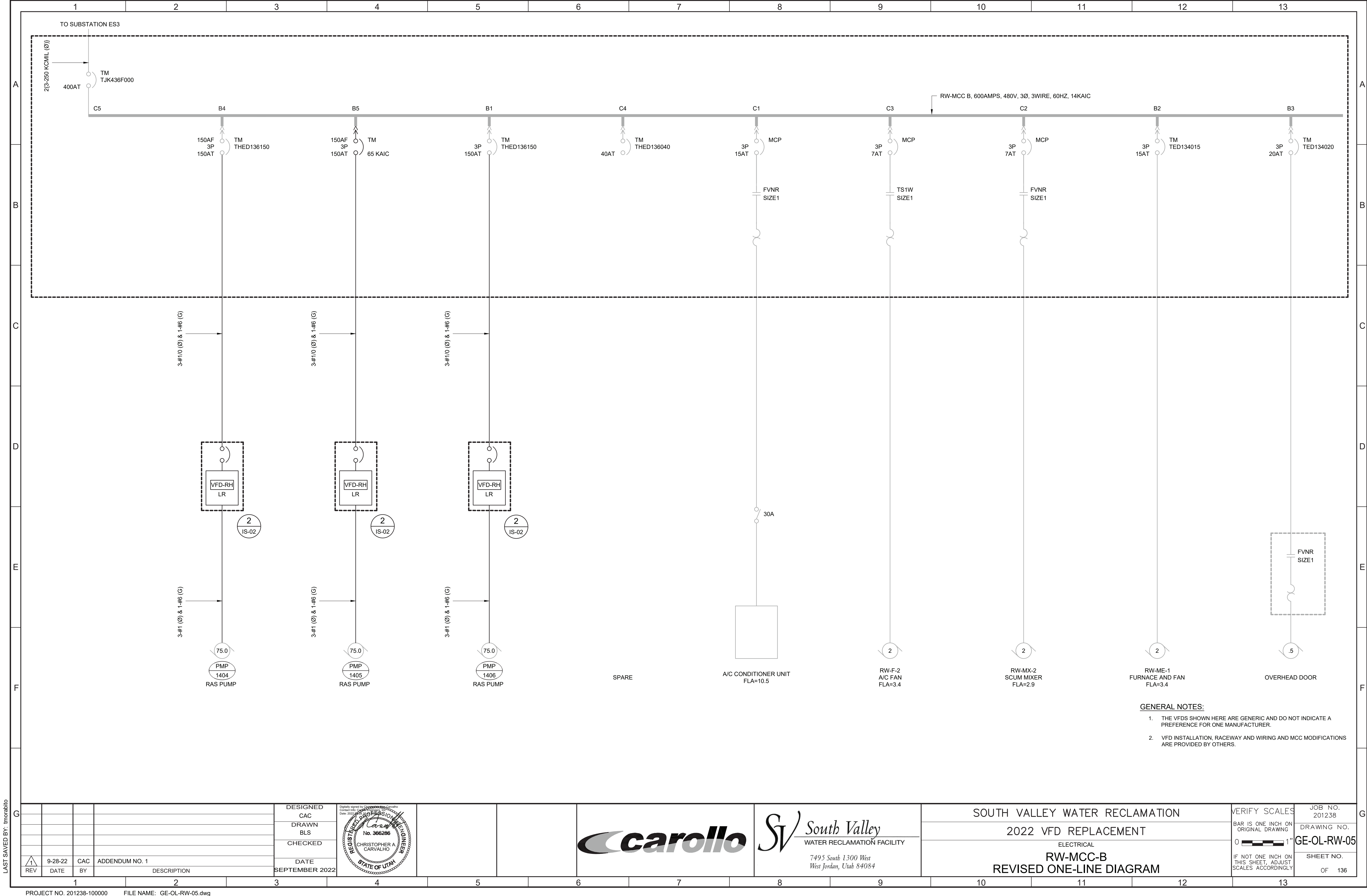
1. THE VFDS SHOWN HERE ARE GENERIC AND DO NOT INDICATE A PREFERENCE FOR ONE MANUFACTURER.
2. VFD INSTALLATION, RACEWAY AND WIRING AND MCC MODIFICATIONS ARE PROVIDED BY OTHERS.

RW-MCC B ELEVATION

- | | | | |
|------|----------------------------|------|-----------------------|
| B1 - | PMP-1406
RAS PUMP | C1 - | RW-MX-2
SCUM MIXER |
| B2 - | RW-ME-1
FURNACE AND FAN | C2 - | RW-ME-4
CONDENSER |
| B3 - | OVERHEAD DOOR | C3 - | RW-ME-5
CONDENSER |
| B4 - | PMP-1404
RAS PUMP | C4 - | RW-F-2
A/C FAN |
| B5 - | PMP-1405
RAS PUMP | C5 - | MAIN FROM ES-3 |
| B6 - | SPACE | | |

				DESIGNED CAC					SOUTH VALLEY WATER RECLAMATION			VERIFY SCALES	JOB NO. 201238
			DRAWN BLS							2022 VFD REPLACEMENT		BAR IS ONE INCH ON ORIGINAL DRAWING	DRAWING NO.
			CHECKED							ELECTRICAL			GE-OL-RW-04
 1 REV	9-28-22	CAC	ADDENDUM NO. 1	DATE SEPTEMBER 2022					RW-MCC-B REVISED ELEVATION			SHEET NO.	
	DATE	BY	DESCRIPTION					7495 South 1300 West West Jordan, Utah 84084				OF 136	

LAST SAVED BY: tmorebito



LAST SAVED BY: Incrabilio



- ## GENERAL NOTES
1. THE VFDS SHOWN HERE ARE GENERIC AND DO NOT INDICATE A PREFERENCE FOR ONE MANUFACTURER.
 2. THE CONTROL SECTIONS ARE PROVIDED BY OTHERS. REFER TO THE SPECIFICATIONS FOR AND SCHEMATICS FOR VFD WIRING REQUIREMENTS.
 3. ALL VFDS ARE FED FROM THE TOP AND ALL MOTOR LEADS EXIT THE TOP WITH THE EXCEPTION OF HW-VFD-4 WHICH IS BOTTOM FED.
 4. VFD INSTALLATION, ALL RACEWAY AND WIRING IS PROVIDED BY OTHERS.
 5. STANDBY POWER FROM DIESEL GENERATORS IS AVAILABLE TO ALL INFLUENT PUMP VFDS.



				DESIGNED CAC	 <p>Digitally signed by Christopher A. Carvalho DN: cn=Christopher A. Carvalho, o=Carvalho Date: 2022.09.28 10:00:00 -0700</p>				 <div><div>South Valley WATER RECLAMATION FACILITY 7495 South 1300 West West Jordan, Utah 84084</div></div>	SOUTH VALLEY WATER RECLAMATION 2022 VFD REPLACEMENT ELECTRICAL HEADWORKS PUMP STATION REVISED VFD LINEUP	VERIFY SCALES	JOB NO. 201238
			DRAWN TLM	BAR IS ONE INCH ON ORIGINAL DRAWING		DRAWING NO.						
			CHECKED CLL	0  1"		1E-01						
			DATE SEPTEMBER 2022	IF NOT ONE INCH ON THIS SHEET, ADJUST SCALES ACCORDINGLY		SHEET NO. OF 136						
	9-28-22	CAC	ADDENDUM NO. 1									
REV	DATE	BY	DESCRIPTION									

Plot Date: 9/28/2022 10:30:42 AM

FILE NAME: 201238GN05.dwg

PROJECT NO. 201238-100000

LAST SAVED BY: bstrepard

--	--	--	--	--	--	--	--	--	--	--	--	--	--	--	--	--	--	--	--	--	--	--	--	--	--	--	--	--	--	--	--	--	--	--	--	--	--	--	--	--	--	--	--	--	--	--	--	--	--	--	--	--	--	--	--	--	--	--	--	--	--	--	--	--	--	--	--	--	--	--	--	--	--	--	--	--	--	--	--	--	--	--	--	--	--	--	--	--	--	--	--	--	--	--	--	--	--	--	--	--	--	--	--	--	--	--	--	--	--	--	--	--	--	--	--	--	--	--	--	--	--	--	--	--	--	--	--	--	--	--	--	--	--	--	--	--	--	--	--	--	--	--	--	--	--	--	--	--	--	--	--	--	--	--	--	--	--	--	--	--	--	--	--	--	--	--	--	--	--	--	--	--	--	--	--	--	--	--	--	--	--	--	--	--	--	--	--	--	--	--	--	--	--	--	--	--	--	--	--	--	--	--	--	--	--	--	--	--	--	--	--	--	--	--	--	--	--	--	--	--	--	--	--	--	--	--	--	--	--	--	--	--	--	--	--	--	--	--	--	--	--	--	--	--	--	--	--	--	--	--	--	--	--	--	--	--	--	--	--	--	--	--	--	--	--	--	--	--	--	--	--	--	--	--	--	--	--	--	--	--	--	--	--	--	--	--	--	--	--	--	--	--	--	--	--	--	--	--	--	--	--	--	--	--	--	--	--	--	--	--	--	--	--	--	--	--	--	--	--	--	--	--	--	--	--	--	--	--	--	--	--	--	--	--	--	--	--	--	--	--	--	--	--	--	--	--	--	--	--	--	--	--	--	--	--	--	--	--	--	--	--	--	--	--	--	--	--	--	--	--	--	--	--	--	--	--	--	--	--	--	--	--	--	--	--	--	--	--	--	--	--	--	--	--	--	--	--	--	--	--	--	--	--	--	--	--	--	--	--	--	--	--	--	--	--	--	--	--	--	--	--	--	--	--	--	--	--	--	--	--	--	--	--	--	--	--	--	--	--	--	--	--	--	--	--	--	--	--	--	--	--	--	--	--	--	--	--	--	--	--	--	--	--	--	--	--	--	--	--	--	--	--	--	--	--	--	--	--	--	--	--	--	--	--	--	--	--	--	--	--	--	--	--	--	--	--	--	--	--	--	--	--	--	--	--	--	--	--	--	--	--	--	--	--	--	--	--	--	--	--	--	--	--	--	--	--	--	--	--	--	--	--	--	--	--	--	--	--	--	--	--	--	--	--	--	--	--	--	--	--	--	--	--	--	--	--	--	--	--	--	--	--	--	--	--	--	--	--	--	--	--	--	--	--	--	--	--	--	--	--	--	--	--	--	--	--	--	--	--	--	--	--	--	--	--	--	--	--	--	--	--	--	--	--	--	--	--	--	--	--	--	--	--	--	--	--	--	--	--	--	--	--	--	--	--	--	--	--	--	--	--	--	--	--	--	--	--	--	--	--	--	--	--	--	--	--	--	--	--	--	--	--	--	--	--	--	--	--	--	--	--	--	--	--	--	--	--	--	--	--	--	--	--	--	--	--	--	--	--	--	--	--	--	--	--	--	--	--	--	--	--	--	--	--	--	--	--	--	--	--	--	--	--	--	--	--	--	--	--	--	--	--	--	--	--	--	--	--	--	--	--	--	--	--	--	--	--	--	--	--	--	--	--	--	--	--	--	--	--	--	--	--	--	--	--	--	--	--	--	--	--	--	--	--	--	--	--	--	--	--	--	--	--	--	--	--	--	--	--	--	--	--	--	--	--	--	--	--	--	--	--	--	--	--	--	--	--	--	--	--	--	--	--	--	--	--	--	--	--	--	--	--	--	--	--	--	--	--	--	--	--	--	--	--	--	--	--	--	--	--	--	--	--	--	--	--	--	--	--	--	--	--	--	--	--	--	--	--	--	--	--	--	--	--	--	--	--	--	--	--	--	--	--	--	--	--	--	--	--	--	--	--	--	--	--	--	--	--	--	--	--	--	--	--	--	--	--	--	--	--	--	--	--	--	--	--	--	--	--	--	--	--	--	--	--	--	--	--	--	--	--	--	--	--	--	--	--	--	--	--	--	--	--	--	--	--	--	--	--	--	--	--	--	--	--	--	--	--	--	--	--	--	--	--	--	--	--	--	--	--	--	--	--	--	--	--	--	--	--	--	--	--	--	--	--	--	--	--	--	--	--	--	--	--	--	--	--	--	--	--	--	--	--	--	--	--	--	--	--	--	--	--	--	--	--	--	--	--	--	--	--	--	--	--	--	--	--	--	--	--	--	--	--	--	--	--	--	--	--	--	--	--	--	--	--	--	--	--	--	--	--	--	--	--	--	--	--	--	--	--	--	--	--	--	--	--	--	--	--	--	--	--	--	--	--	--	--	--	--	--	--	--	--	--	--	--	--	--	--	--	--	--	--	--	--	--	--	--	--	--	--	--	--	--	--	--	--	--	--	--	--	--	--	--	--	--	--	--	--	--	--	--	--	--	--	--	--	--	--	--	--	--	--	--	--	--	--	--	--	--	--	--	--	--	--	--	--	--	--	--	--	--	--	--	--	--	--	--	--	--	--	--	--	--	--	--	--	--	--	--	--	--	--	--	--	--	--	--	--	--	--	--	--	--	--	--	--	--	--	--	--	--	--	--	--	--	--	--	--



SOUTH VALLEY WATER RECLAMATION
2022 VFD REPLACEMENT
INSTRUMENTATION
SCHEMATIC SYMBOLS

VERIFY SCALES
BAR IS ONE INCH ON
ORIGINAL DRAWING
0 1"
IF NOT ONE INCH ON
THIS SHEET, ADJUST
SCALES ACCORDINGLY

JOB NO.
201238
DRAWING NO.
GN05
SHEET NO.
OF

Plot Date: 20-SEP-2022 9:07:09 AM

User: svcPW

Model: Layout1 ColorTable: gshade.ctb DesignScript: Carollo_Std_Pen_v0905.pen PlotScale: 1:1

LAST SAVED BY: jstepard

