

**ADDENDUM NO. 1**  
**to the SVWRF CONTRACT DOCUMENTS for the**  
**Yard Piping Improvements Project**

**July 8, 2020**

- 1. The Bid opening shall be changed to Thursday July 16, 2020 at 11:00 am. Bids must be submitted to the office of the Owner prior to this time.**
- 2. The drawing package has been revised to show additional detail on the items noted in the bid schedule. Replace the drawing set with the revised drawing set dated 7/8/2020.**
- 3. Replace “Section 310 Bid Schedules” with the attached “Section 310 Bid Schedule Addendum 1”**

THIS ADDENDUM IS HEREBY ATTACHED TO AND MADE A PART OF THE CONTRACT DOCUMENTS. EACH BIDDER SHALL ACKNOWLEDGE RECEIPT AND ACCEPTANCE OF ALL CONDITIONS CONTAINED HEREIN BY ENTERING THE ADDENDUM NUMBER AND DATE IN THE SPACE PROVIDED IN THE BIDDING DOCUMENTS.

---

Jared Oldroyd, P.E.  
JWO Engineering, PLLC

**SECTION 00310 – BID SCHEDULES ADDENDUM 1**

**PART 1 – GENERAL**

**1.01 CONSTRUCTION CONTRACT**

A. Name of Project: South Valley Water Reclamation Facility – Yard Piping Improvements 2020

**1.02 SCHEDULES TO BE ADDED TO THE AGREEMENT**

A. This Bid Schedule contains the schedules of prices which will be incorporated into the Agreement by reference.

**1.03 TAXES**

A. The Bidder agrees that all sales, consumer, use, and other similar taxes are included in the stated bid prices for the WORK, unless provision is made herein for the Bidder to separately itemize the estimated amount of tax.

**1.04 SCHEDULES OF PRICES**

A. Schedule A: Unit Cost Bid. This item includes all of the WORK for the project as specified and shown on the Contract Documents. OWNER will determine the final quantities of each bid item to be included in the project. Actual quantities may be more or less than the quantity shown in the bid schedule based on the OWNER's determination.

**SCHEDULE A  
Clarifiers 1-4 Hydrants**

<b>Item No.</b>	<b>Description</b>	<b>Quantity Unit</b>	<b>Unit Cost<sup>1</sup></b>	<b>Total Cost<sup>2</sup></b>
1	Mobilization, Permits, Clean-up, Demobilization	1 Lump Sum	\$	\$
2	Yard Hydrant Replacement including concrete removal, excavation, removal of existing hydrant and valve(s), installation of new shutoff valve, piping, hydrant, drain sump, concrete slab(s), and site restoration.	12 EA	\$	\$

It is anticipated that yard hydrants 1A, 1B, 1C, 2B, 2C, 2D, 3A, 3B, 3D, 4A, 4C, and 4D, will be included in this bid schedule.

Bid Schedule Total in Words:

---

- B. Schedule B: Unit Cost Bid. This item includes all of the WORK for the project as specified and shown on the Contract Documents. OWNER will determine the final quantities of each bid item to be included in the project. Actual quantities may be more or less than the quantity shown in the bid schedule based on the OWNER's determination.

**SCHEDULE B**  
**Clarifiers 1-4 Hydrants Near Scum Beaches**

Item No.	Description	Quantity Unit	Unit Cost <sup>1</sup>	Total Cost <sup>2</sup>
1	Yard Hydrant Replacement including concrete removal, excavation, removal of existing hydrant and valve(s), installation of new shutoff valve, piping including connection to scum beach supply line, hydrant, drain sump, concrete slab(s), and site restoration.	4 EA	\$	\$

It is anticipated that yard hydrants 1D, 2A, 3C, and 4B, will be included in this bid schedule.

Bid Schedule Total in Words:

---

- C. Schedule C: Unit Cost Bid. This item includes all of the WORK for the project as specified and shown on the Contract Documents. OWNER will determine the final quantities of each bid item to be included in the project. Actual quantities may be more or less than the quantity shown in the bid schedule based on the OWNER's determination.

**SCHEDULE C**  
**System Valves**

<b>Item No.</b>	<b>Description</b>	<b>Quantity Unit</b>	<b>Unit Cost<sup>1</sup></b>	<b>Total Cost<sup>2</sup></b>
1	Valve 3 4" Gate Valve Replacement including excavation, removal of existing valve, installation of new valve, valve box, concrete pad, appurtenances and site restoration.	1 EA	\$	\$
2	Valve 12 4" Gate Valve Replacement including excavation, removal of existing valve, installation of new valve, valve box, concrete pad, appurtenances and site restoration.	1 EA	\$	\$
3	Valve 13 4" Gate Valve Replacement including excavation, removal of existing valve, installation of new valve, valve box, concrete pad, appurtenances and site restoration.	1 EA	\$	\$
4	Valve 14 4" Gate Valve Replacement including excavation, removal of existing valve, installation of new valve, valve box, concrete pad, appurtenances and site restoration.	1 EA	\$	\$
5	Valve 5 6" Gate Valve Replacement including excavation, removal of existing valve, installation of new valve, valve box, concrete pad, appurtenances and site restoration.	1 EA	\$	\$
6	Valve 6 6" Gate Valve Replacement including excavation, removal of existing valve, installation of new valve, valve box, concrete pad, appurtenances and site restoration.	1 EA	\$	\$

7	Valve 7 6" Gate Valve Replacement including excavation, removal of existing valve, installation of new valve, valve box, concrete pad, appurtenances and site restoration.	1 EA	\$	\$
8	Valve 4 8" Gate Valve Replacement including excavation, removal of existing valve, installation of new valve, valve box, concrete pad, appurtenances and site restoration.	1 EA	\$	\$
9	Fire Hydrant Replacement including excavation, removal of existing hydrant, surplus of hydrant to the facility, installation of new hydrant to grade shown, concrete pad, appurtenances and site restoration	1 EA	\$	\$

Bid Schedule Total in Words:

---

D Schedule D: Unit Cost Bid. This item includes all of the WORK for the project as specified and shown on the Contract Documents. OWNER will determine the final quantities of each bid item to be included in the project. Actual quantities may be more or less than the quantity shown in the bid schedule based on the OWNER's determination.

**SCHEDULE D  
Clarifier 5-6 Hydrants**

<b>Item No.</b>	<b>Description</b>	<b>Quantity Unit</b>	<b>Unit Cost<sup>1</sup></b>	<b>Total Cost<sup>2</sup></b>
1	Yard Hydrant Replacement including concrete and asphalt removal, excavation, removal of existing hydrant and valve(s), installation of new shutoff valve, piping, hydrant, drain sump, concrete slab(s), asphalt repair and site restoration.	4 EA	\$	\$

It is anticipated that yard hydrants 5A, 5D, 6C, and 6D will be included in this bid schedule.

Bid Schedule Total in Words:

---

E Schedule E: Unit Cost Bid. This item includes all of the WORK for the project as specified and shown on the Contract Documents. OWNER will determine the final quantities of each bid item to be included in the project. Actual quantities may be more or less than the quantity shown in the bid schedule based on the OWNER's determination.

**SCHEDULE E  
Clarifier 5-6 Hydrants Near Scum Beaches**

<b>Item No.</b>	<b>Description</b>	<b>Quantity Unit</b>	<b>Unit Cost<sup>1</sup></b>	<b>Total Cost<sup>2</sup></b>
1	Yard Hydrant Replacement including concrete removal, excavation, removal of existing hydrant and valve(s), installation of new shutoff valve, piping including connection to scum beach supply line, hydrant, drain sump, concrete slab(s), and site restoration.	2 EA	\$	\$

It is anticipated that yard hydrants 5B, and 6B will be included in this bid schedule.

Bid Schedule Total in Words:

---

<sup>1</sup>Unit Cost shall include furnishing and installing all items necessary for a complete and functioning installation.

<sup>2</sup>The Total Cost is the sum of the unit costs, for the quantity indicated. The contract shall be awarded on a Unit Cost basis. Owner reserves the right to increase or decrease quantities.

All Unit Costs and Total Costs shall include all labor, equipment, tools, supplies, insurance, taxes, overhead, markups, applicable fees and all other costs associated with performing the Work. These costs shall be distributed fairly among the Bid Items according to their relative amounts and not weighted or unbalanced. The Owner may elect to perform or not perform any of the Bid Item Work according to its best interest, financial limitations or other considerations. The Unit Costs and Total Costs will be used to adjust the Contractor's compensation accordingly. No other compensation will be made for loss of revenue or profit or other expenses associated with these items.

- END OF BID SCHEDULES -

**GENERAL NOTES**

- CONTRACTOR SHALL HAVE SOLE RESPONSIBILITY FOR SAFETY OF THE JOBSITE. CONTRACTOR IS SOLELY RESPONSIBLE FOR CONFORMANCE WITH LOCAL AND FEDERAL CODES GOVERNING SAFETY. CONTRACTOR IS RESPONSIBLE FOR THE SAFETY OF THE PUBLIC AND PROTECTION OF PERSONNEL AND WORKERS.
- CONTRACTOR SHALL BE RESPONSIBLE TO OBTAIN ALL NECESSARY PERMITS (INCLUDING PERMIT FEES) AND COMPLY WITH THE REGULATIONS AND REQUIREMENTS OF ALL GOVERNMENTAL ENTITIES HAVING JURISDICTION.
- CONTRACTOR SHALL TAKE NECESSARY MEASURES TO PRESERVE AND PROTECT EXISTING STRUCTURES, WALLS, DRIVEWAYS, FENCES, LANDSCAPING, TREES, CURB AND GUTTER, SIDEWALK, AND OTHER IMPROVEMENTS. ANY SUCH IMPROVEMENTS REMOVED OR DAMAGED BY CONTRACTOR'S ACTIVITY SHALL BE REPLACED OR REPAIRED TO ORIGINAL OR BETTER CONDITION AT THE SOLE EXPENSE OF THE CONTRACTOR.
- CONTRACTOR SHALL FIELD VERIFY LOCATIONS AND INVERT ELEVATIONS OF EXISTING BURIED PIPING, PIPE SIZES AND OTHER UTILITIES BEFORE ANY CONSTRUCTION.
- UTILITIES SHOWN ON THE DRAWINGS ARE BASED ON THE BEST AVAILABLE INFORMATION PROVIDED BY OTHERS, AND SHOULD BE CONSIDERED APPROXIMATE AND FOR GENERAL INFORMATION ONLY. CONTRACTOR IS RESPONSIBLE TO LOCATE AND PROTECT ALL UTILITIES IN THE PROJECT AREA, INCLUDING THOSE THAT MAY NOT BE SHOWN OR THAT MAY BE SHOWN INCORRECTLY. CONTRACTOR IS SOLELY RESPONSIBLE FOR THE REPAIR OF ANY UTILITY DAMAGED AS A RESULT OF THE CONTRACTOR'S OPERATIONS. RELOCATIONS AND/OR REPLACEMENTS OF EXISTING UTILITIES SHALL BE COORDINATED BY THE CONTRACTOR WITH THE UTILITY OWNER. CONTRACTOR SHALL CONTACT, SCHEDULE, AND ESTABLISH ANY REQUIRED UTILITY SHUT DOWN TIMES AND DETERMINE THE RELOCATION AND/OR REPLACEMENT REQUIREMENTS OF EXISTING UTILITIES PRIOR TO THE START OF ANY WORK. CONTRACTOR SHALL NOTIFY THE ENGINEER OF ANY DISCREPANCIES PRIOR TO PROCEEDING CONSTRUCTION FOR NECESSARY PLAN OR GRADE CHANGES. NO EXTRA COMPENSATION SHALL BE PAID TO THE CONTRACTOR FOR WORK HAVING TO BE REDONE DUE TO DIMENSIONS OR GRADES SHOWN INCORRECTLY ON THESE PLANS. ANY DISCREPANCIES OBSERVED BY THE CONTRACTOR SHALL BE IMMEDIATELY BROUGHT TO THE ATTENTION OF THE ENGINEER.
- CONTRACTORS ACCESS SHALL BE LIMITED TO THE HOURS OF 7:00 AM TO 7:00 PM MONDAY – FRIDAY.
- CONTRACTOR TO COMPLY WITH WEST JORDAN CITY SWPPP REQUIREMENTS.

**YARD PIPING IMPROVEMENTS PROJECT NOTES**

- SWRF 2020 YARD PIPING IMPROVEMENTS PROJECT

THE WORK OF THIS CONTRACT INCLUDES BUT IS NOT LIMITED TO:

- REPLACEMENT OF GATE VALVES INCLUDING VALVE, VALVE BOX, CONCRETE, AND APPURTENANCES.
- REPLACEMENT OF YARD HYDRANTS INCLUDING VALVE, PIPING, HYDRANT, CONCRETE, AND APPURTENANCES.
- ADJUSTMENT OF FIRE HYDRANTS INCLUDING VALVE BOX ADJUSTMENT, ELEVATION RAISE, CONCRETE AND APPURTENANCES.
- PIPING REPAIRS AS NOTED.
- SITE RESTORATION INCLUDING ASPHALT, CONCRETE, AND LANDSCAPING.
- NEW CONCRETE WHERE INDICATED.

- WORK ITEMS TO BE COORDINATED WITH OWNER. ONLY OWNER MAY CLOSE AND OPEN VALVES.

ITEM	DESCRIPTION	VALVE SIZE	VALVE DEPTH	ISOLATION VALVES TO BE CLOSED
1	REPLACE VALVE 3	4"	54"	1,2,11,15 OR 13
2	REPLACE VALVE 4	8"	45"	1,2,11,15 OR 13
3	REPLACE VALVE 5	6"	59"	3,4,11,15 OR 13
4	REPLACE VALVE 6	6"	57"	3,5,11,15 OR 13
5	ADJUST FIRE HYDRANT	6"	57"	NEW 4, 11,12
6	REPLACE VALVE 7	6"	46"	NEW 6,11,12
7	REPLACE VALVE 14*	4"	52"	NEW 3, 11,12
8	REPLACE VALVE 12	4"	53"	NEW 6, NEW 7, NEW 14
9	REPLACE VALVE 13	4"	52"	NEW 3, NEW 12, 15
10	OTHER VALVE REPLACEMENTS AS DIRECTED BY THE OWNER			
11	YARD HYDRANT INSTALLATIONS (SEE DETAILS SHEETS)			

\*VALVE 14 IS NORTHERN MOST OF 3 VALVE GROUP

- ALL NEW PIPING SHALL BE SHOWN TO BE FREE OF LEAKS PRIOR TO BACKFILL. COORDINATE TESTING WITH OWNER.
- CONCRETE MAY BE USED IN PLACE OF NEW ASPHALT WHERE NEW ASPHALT IS SHOWN ON THE PLANS.

**CONTACTS**

- OWNER**  
SOUTH VALLEY WATER RECLAMATION FACILITY  
TAIGON WORTHEN P.E. 801-495-5469

**DESIGN FIRM**

- ENGINEER**  
JWO ENGINEERING, PLLC  
JARED OLDROYD PE 801-828-7805

**OTHER CONTACTS**

- GAS QUESTAR GAS (EMERGENCY)**  
800-767-1689

**ABBREVIATIONS**

⊙	AT	MATL	MATERIAL
AB	ANCHOR BOLT	MAX	MAXIMUM
ADD'L	ADDITIONAL	MFR	MANUFACTURER
AL	ALUMINUM	MH	MANHOLE
APPROX	APPROXIMATE	MIN	MINIMUM
ASSY	ASSEMBLY	MISC	MISCELLANEOUS
BLDG	BUILDING	N	NORTH
BOT	BOTTOM	NTS	NOT TO SCALE
BTWN	BETWEEN	OC	ON CENTER
C	CONDUIT	OPNG	OPENING
CB	CATCH BASIN	PH	POTHOLE
CFM	CUBIC FEET PER MINUTE	PS	PUMPED SEWER
CL	CENTERLINE	PT	POINT
CLR	CLEAR, CLEARANCE	PVC	POLYVINYL CHLORIDE
CO	CLEAN OUT BOX	PW	POTABLE WATER
CONC	CONCRETE	R	RADIUS
CONN	CONNECTION	RCP	REINFORCED CONCRTE PIPE
CONST	CONSTRUCTION	RCB	REINFORCED BOX CULVERT
CONT	CONTINUOUS	RDCR	REDUCER
CPLG	COUPLING	REINF	REINFORCED, REINFORCING
CTRD	CENTERED	REQD	REQUIRED
CTR	CENTER	RT	RIGHT
CU FT	CUBIC FOOT	RW	RAW WATER
DEFL	DEFLECTION	SCH	SCHEDULE
DI	DUCTILE IRON	SD	STORM DRAIN
DIA	DIAMETER	SIM	SIMILAR
DWG	DRAWING	SLP	SLOPE
DWL	DOWEL	SPD	SUMP PUMP DISCHARGE
EA	EACH	SPEC	SPECIFICATION (S)
EF	EACH FACE	SQ	SQUARE
EJC	EAST JORDAN CANAL	SS	SANITARY SEWER
EL	ELEVATION	SSL	SEWER SERVICE LATERAL
ELB	ELBOW	SST	STAINLESS STEEL
EQ	EQUAL	STA	STATION
EQL SP	EQUALLY SPACED	STD	STANDARD
EQUIP	EQUIPMENT	STL	STEEL
EW	EACH WAY	STRL	STRUCTURAL
EXIST	EXISTING	STRUCT	STRUCTURE
FG	FINISH GRADE	T&B	TOP AND BOTTOM
FL	FLOW LINE	TBC	TOP BACK CURB
FLG	FLANGE	TDH	TOTAL DEPTH IN HEAD
FLR	FLOOR	TEL	TELEPHONE
FNSH	FINISH	THK	THICK OR THICKNESS
FT	FEET OR FOOT	TOA	TOP OF ASPHALT
FTG	FOOTING	TOG	TOP OF GRATE
G	GAS	TOW	TOP OF WALL
GA	GAGE OR GAUGE	TYP	TYPICAL
GALV	GALVANIZED	UTBC	UNTREATED BASE COURSE
GE	GROOVED END	VCP	VENT PIPING
GPM	GALLONS PER MINUTE	W	WATER OR WEST
GS	GAS SERVICE LATERAL	W/	WITH
HORIZ	HORIZONTAL	W/O	WITHOUT
HP	HORSE POWER	WSTP	WATERSTOP
HSS	HIGH STRENGTH STEEL	WS	WATER SERVICE LATERAL
IE	INVERT ELEVATION		
INVT	INVERT		
J&SLC	JORDAN & SALT LAKE CANAL		
JT	JOINT		
LF	LINEAR FEET		
LG	LONG		
LT	LEFT		



VERIFY SCALE:  
BAR IS 1" IN  
ORIGINAL DRAWING

PROJECT #  
014-2020-001  
DATE: 06/10/2020

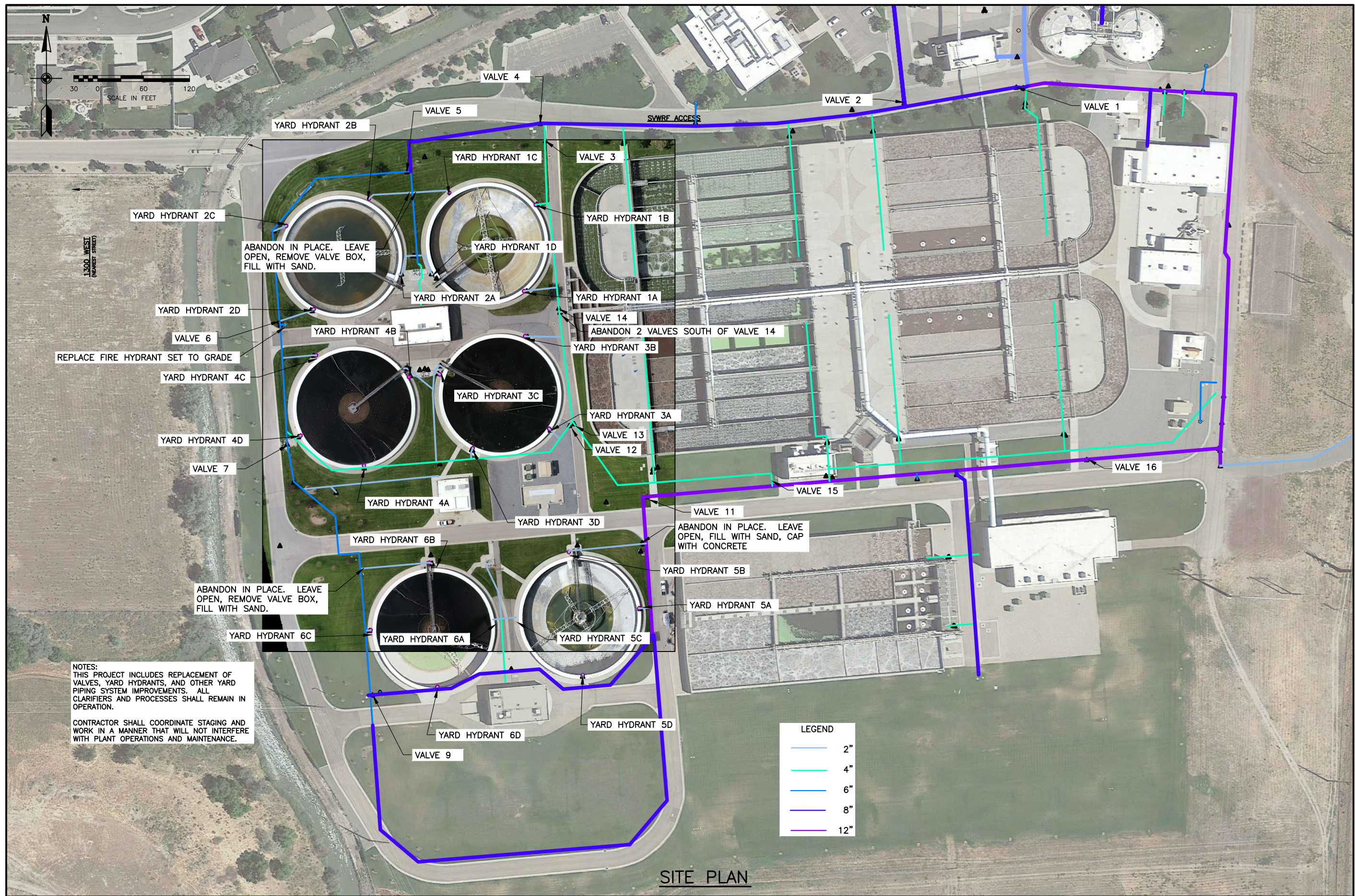


REVISION	DATE	DESCRIPTION
01	07/09/2020	R. SPRAGUE
	06/29/2020	R. SPRAGUE

SWRF 2020 YARD PIPING IMPROVEMENTS PROJECT NOTES, CONTACTS AND ABBREVIATIONS

DRAWING  
G-02  
SHEET  
2 OF 8





NOTES:  
 THIS PROJECT INCLUDES REPLACEMENT OF VALVES, YARD HYDRANTS, AND OTHER YARD PIPING SYSTEM IMPROVEMENTS. ALL CLARIFIERS AND PROCESSES SHALL REMAIN IN OPERATION.  
 CONTRACTOR SHALL COORDINATE STAGING AND WORK IN A MANNER THAT WILL NOT INTERFERE WITH PLANT OPERATIONS AND MAINTENANCE.

ABANDON IN PLACE. LEAVE OPEN, REMOVE VALVE BOX, FILL WITH SAND.

ABANDON 2 VALVES SOUTH OF VALVE 14

ABANDON IN PLACE. LEAVE OPEN, FILL WITH SAND, CAP WITH CONCRETE

LEGEND	
	2"
	4"
	6"
	8"
	12"

VERIFY SCALE:  
 BAR IS 1" IN  
 ORIGINAL DRAWING

PROJECT #  
014-2020-001

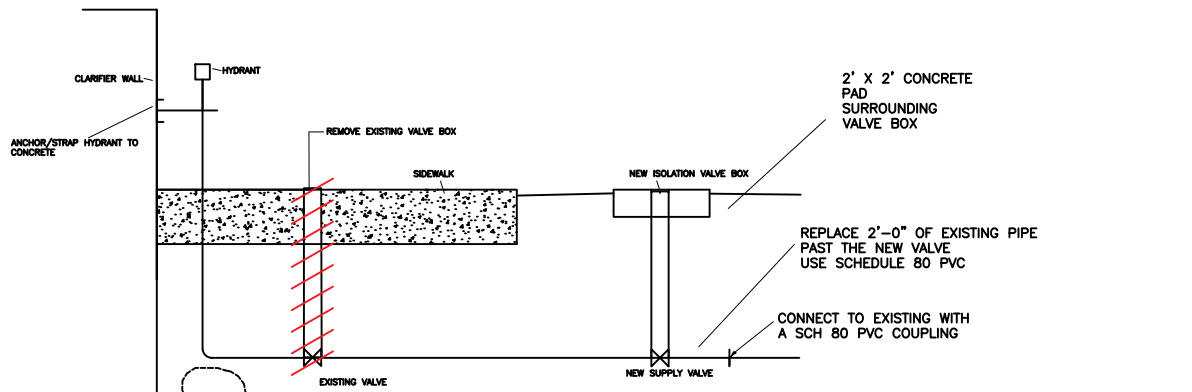
DATE: 06/10/2020

REVISION	DATE	DRAWN BY	CHECKED BY	DESCRIPTION
01	07/09/2020	R. SPRAGUE	J. OLDROYD	ADDENDUM 1 CLARIFICATIONS
BIDSET	06/29/2020	R. SPRAGUE	J. OLDROYD	

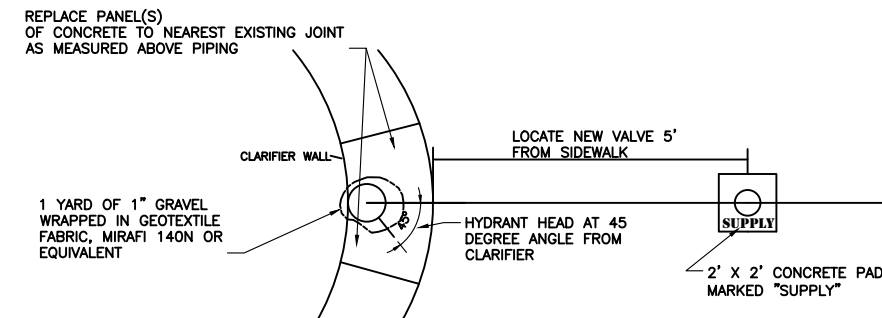
SWRF 2020 YARD PIPING IMPROVEMENTS PROJECT

SITE PLAN

DRAWING  
 C-02  
 SHEET  
 4 OF 8

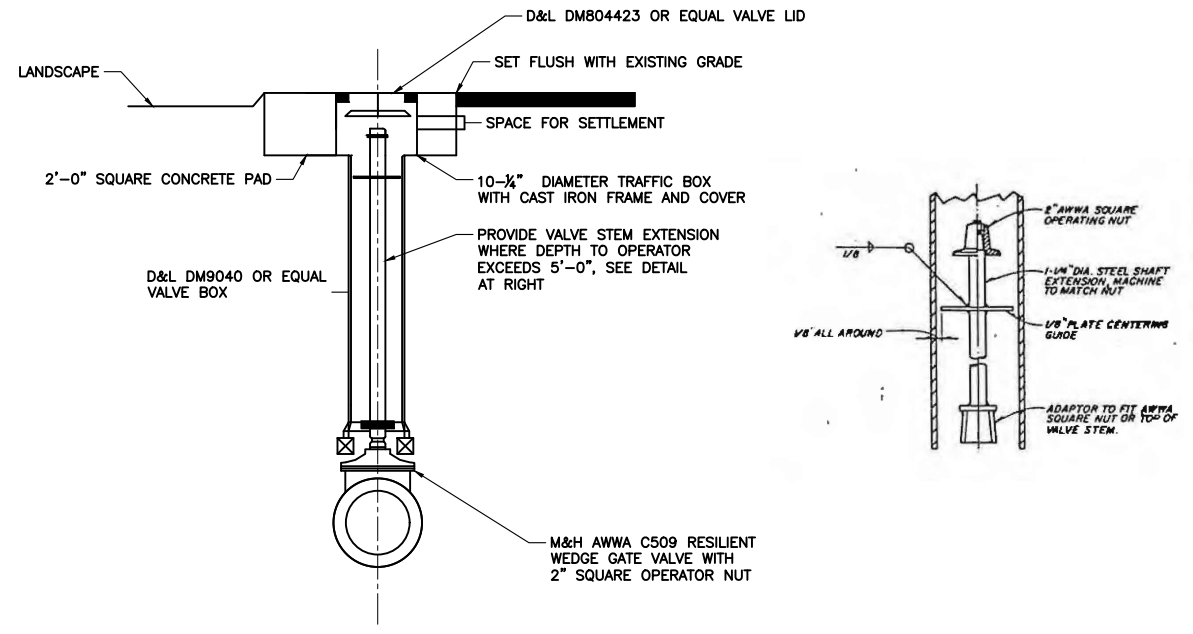


**(E) YARD HYDRANT REPLACEMENT PROFILE**  
SCALE: NONE

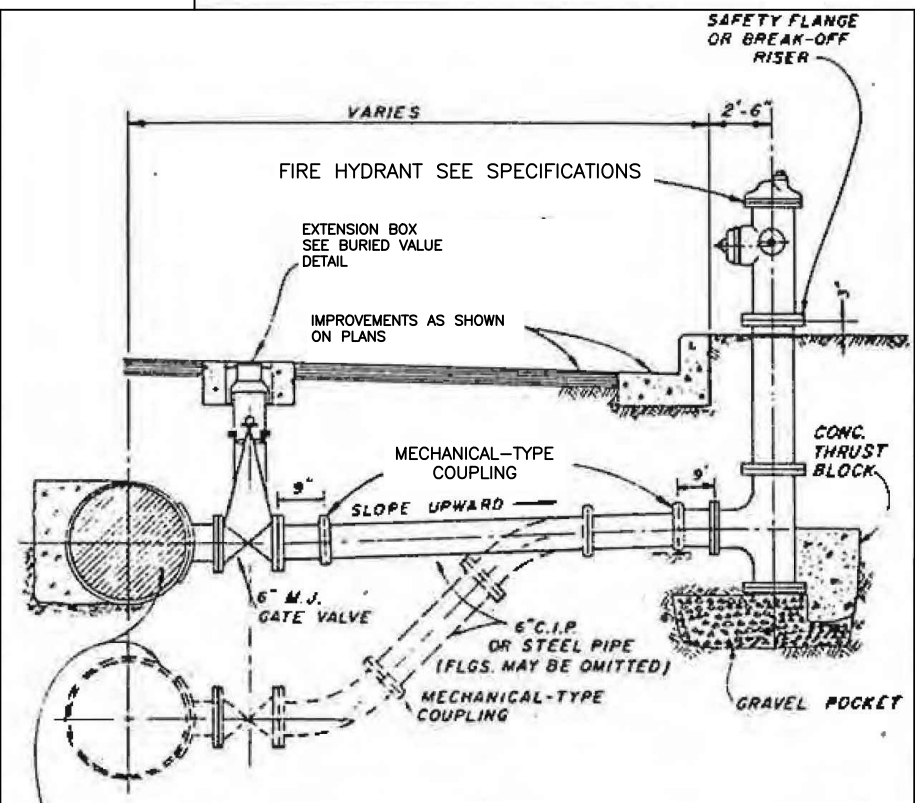


**(F) YARD HYDRANT REPLACEMENT PLAN**  
SCALE: NONE

**NOTES:** INSTALL 2' SQUARE BY 6" THICK CONCRETE PAD AT VALVE BOX COVER OPERATOR STEM EXTENSION WHERE PROVIDED SHALL EXTEND TO 12" BELOW VALVE COVER SUPPORT VALVE BOX ON 2"x2"x12" REDWOOD BLOCKS ON CRUSHED ROCK

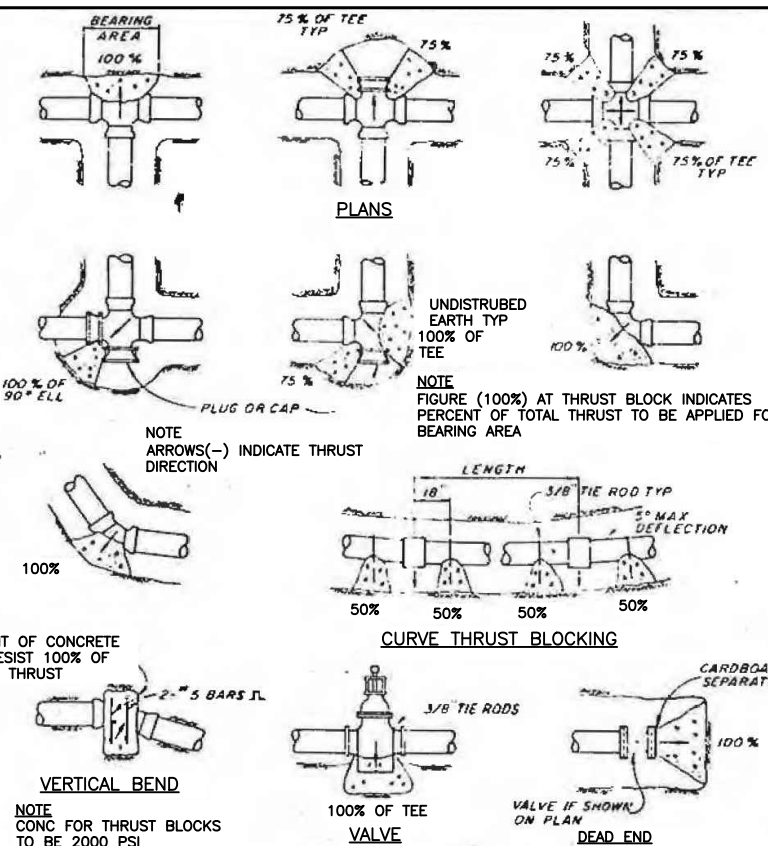


**(A) BURIED VALVE DETAIL**  
SCALE: NONE



**(D) TYPICAL HYDRANT LATERAL DETAIL**  
SCALE: NONE

**NOTES:**  
1 ALL FERROUS SURFACES OF PIPE AND APPURTENANCES TO BE PROVIDED WITH PROTECTIVE COATINGS PER SPECS  
2 PROVIDE STAINLESS STEEL NUTS, BOLTS AND WSHERS TO BURIED FLANGES AND COUPLINGS, EXCEPT FOR NON-METALLIC WASHERS TO BE PROVIDED AS PART OF INSULATING FLANGE SET.



**(G) CONCRETE THRUST BLOCKS**  
SCALE: NONE

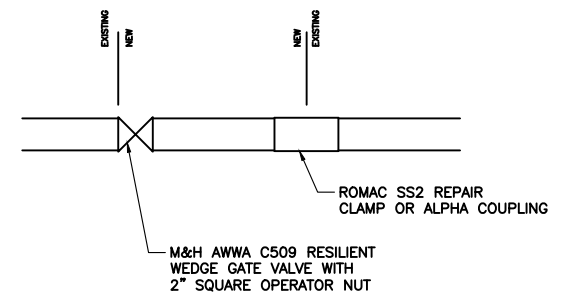
THRUST PER POUND OF WATER PRESSURE AT VARIOUS FITTINGS				
PIPE SIZE	DEAD END OR TEE	90° ELBOW	45° ELBOW	22-1/2° ELBOW
4	19	27	15	7
6	39	55	30	15
8	67	94	51	26
10	109	154	84	43
12	155	218	119	61
14	210	296	161	82
16	272	383	209	106
8	351	494	269	137
20	434	611	333	169
24	623	878	478	244

**EXAMPLE:**  
8-INCH 90° ELBOW AT 200 LB MAXIMUM PRESSURE.  
FROM TABLE THRUST = 94 \* 200 = 18,800 LB.  
ASSUME BEARING STRENGTH OF SOIL = 2000 LB/ SQ FT  
18,800/2000 = 94 SQ FT = AREA OF BEARING REQUIRED FOR THRUST BLOCK

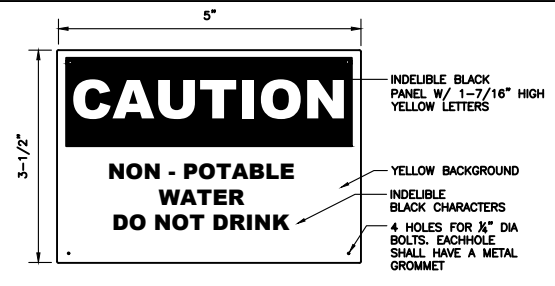
SIDE THRUST PER 100 LB/SQ IN PRESSURE PER DEGREE OF DEFLECTION			
PIPE SIZE	SIDE THRUST-LB	PIPE SIZE	SIDE THRUST-LB
4	35	14	377
6	72	16	486
8	122	18	665
10	197	20	790
12	278	24	1150

**NOTES:**  
1 IN USING THE ABOVE TABLES, USE THE MAXIMUM PRESSURE ANTICIPATED I.E. HYDROSTATIC TEST PRESSURE, POSSIBLE SURGE PRESSURE DUE TO PUMP SHUT-OFF, ETC.  
2 SEE SOILS REPORT FOR BEARING STRENGTH OF SOIL. IN THE ABSENCE OF A SOILS REPORT, AN AVERAGE SOIL (SPADABLE MEDIUM CLAY) CAN BE ASSUMED TO HAVE A BEARING STRENGTH OF 2000 PSI.  
3 THRUST BLOCKS ARE NOT REQUIRED ON PVC PIPE WITH SOLVENT MELDED JOINTS

MULTIPLY THRUST BY DEGREE OF DEFLECTION TO OBTAIN TOTAL THRUST



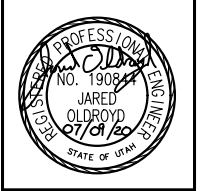
**(B) TYPICAL VALVE REPLACEMENT DETAIL**  
SCALE: NONE



**NOTES:** MATERIAL TO BE SEMI-RIGID BUTYRATE OR APPROVED EQUAL, AS MANUFACTURED BY SETON NAME PLATE CORP., NEW HAVEN, CONN, 06500, W.H. BRADY CO, MILWAUKEE, WIS 53201 OR EQUAL  
COLORS & LETTER SIZES TO BE PER OSHA STANDARDS FOR CAUTION SIGNS  
PROVIDE THIS SIGN AT ALL HOSE BIBB LOCATIONS WHERE WATER IS NON-POTABLE

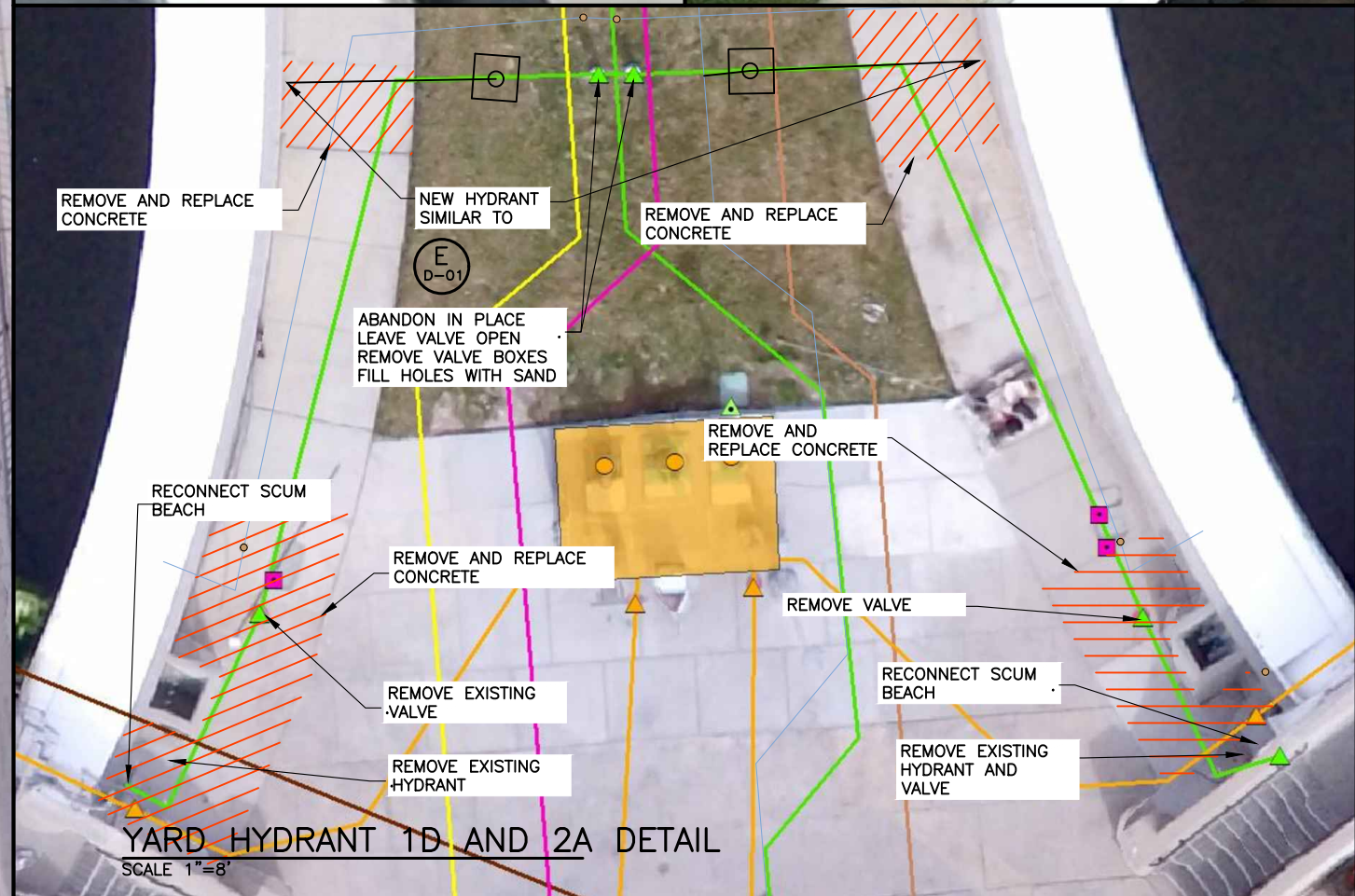
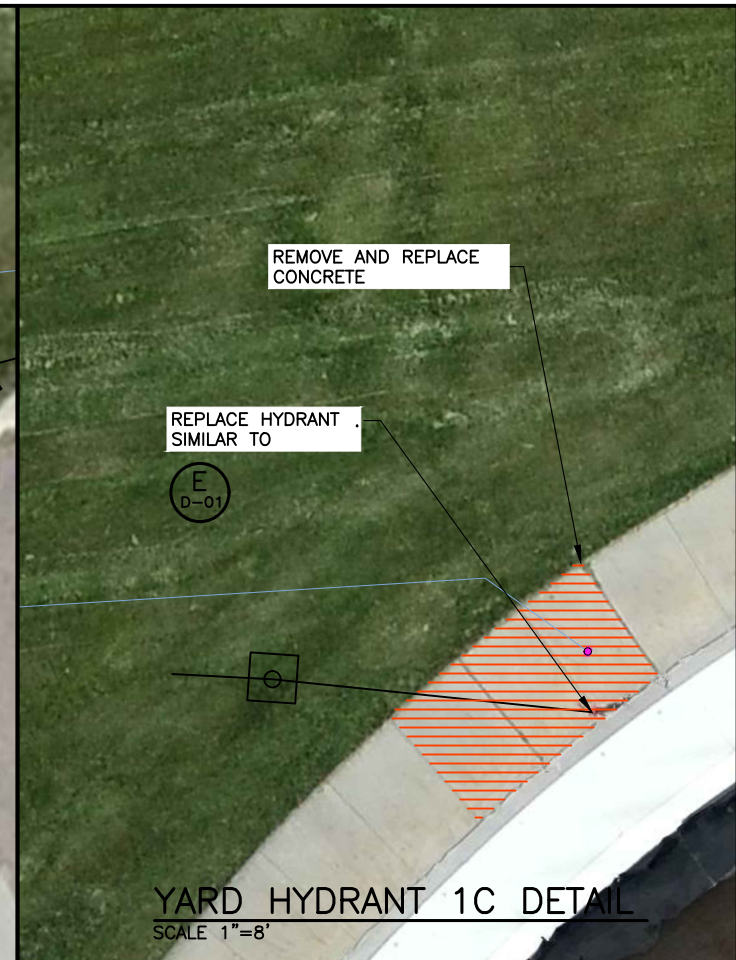
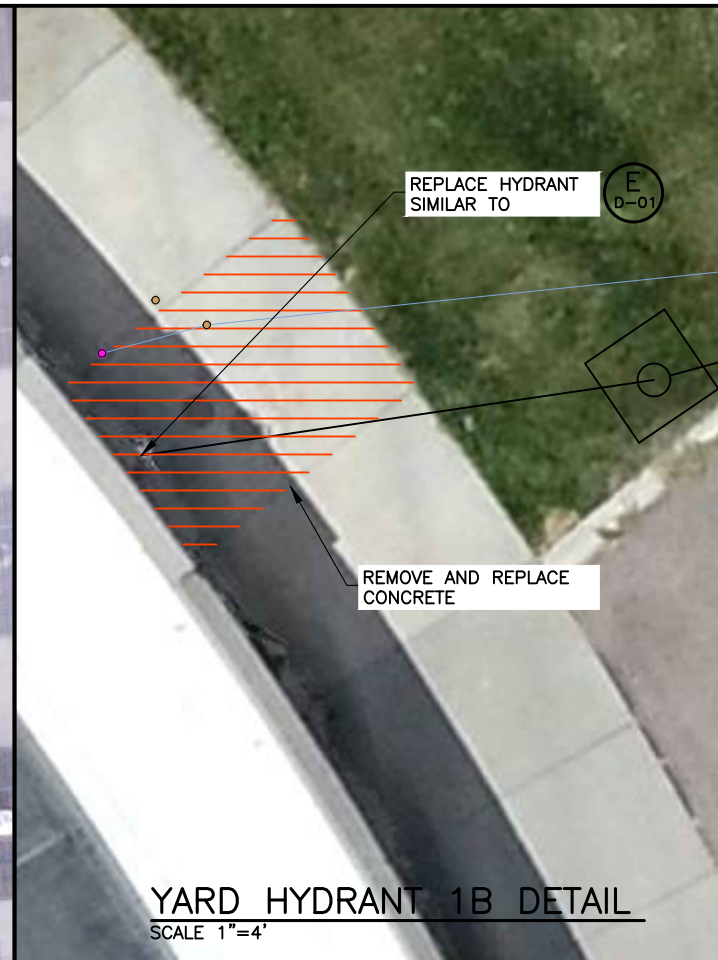
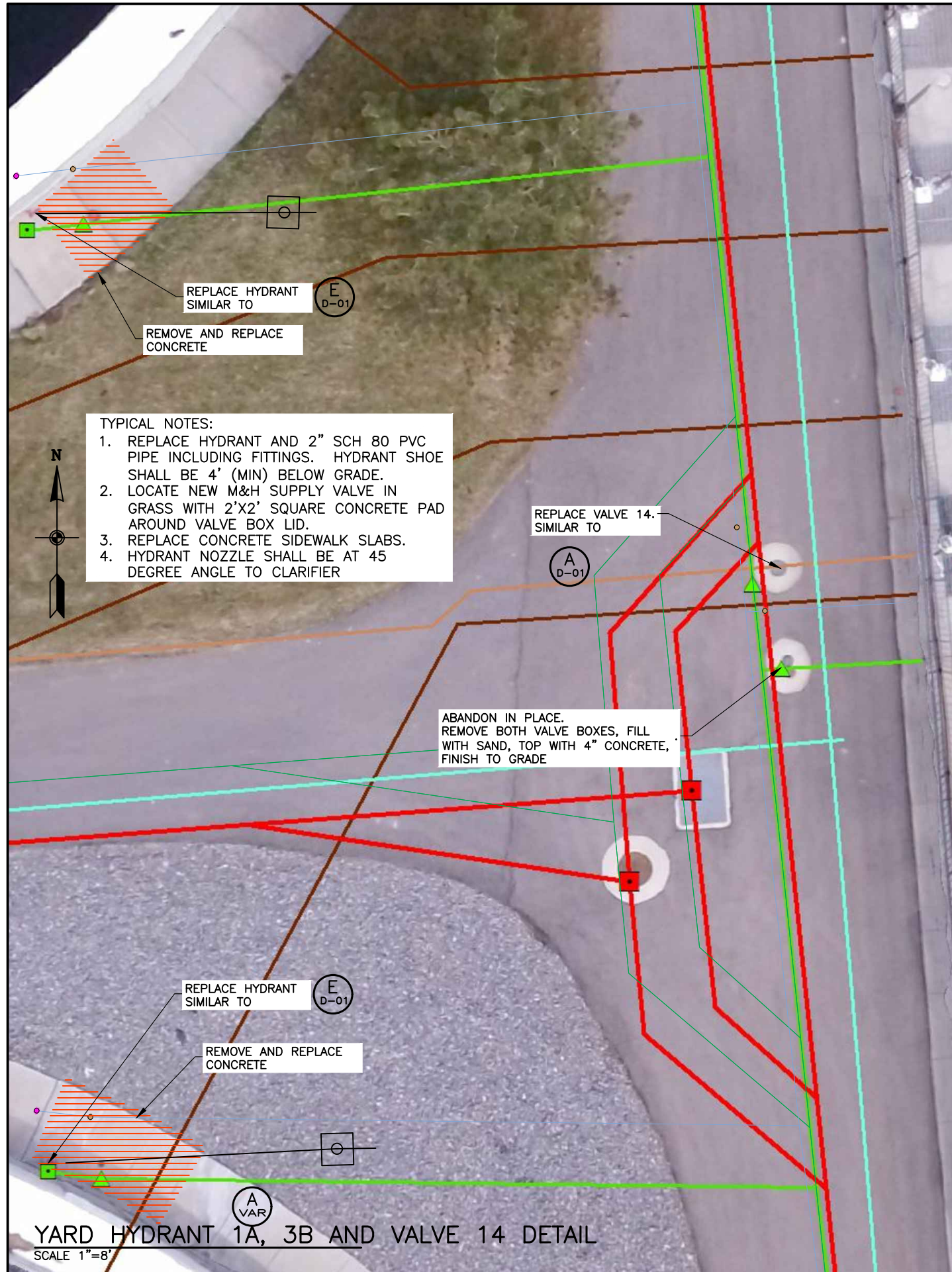
**(C) WARNING SIGN FOR NON-POTABLE WATER**  
SCALE: NONE

**JWO ENGINEERING**  
VERIFY SCALE: BAR IS 1" IN ORIGINAL DRAWING  
PROJECT # 014-2020-001  
DATE: 06/10/2020



REVISION	DATE	DRAWN BY	CHECKED BY	DESCRIPTION
01	07/09/2020	R. SPRAGUE	J. OLDROYD	ADDENDUM 1 CLARIFICATIONS
BIDSET	06/29/2020	R. SPRAGUE	J. OLDROYD	

SWRF 2020 YARD PIPING IMPROVEMENTS PROJECT  
**DETAILS**



- TYPICAL NOTES:**
1. REPLACE HYDRANT AND 2" SCH 80 PVC PIPE INCLUDING FITTINGS. HYDRANT SHOE SHALL BE 4' (MIN) BELOW GRADE.
  2. LOCATE NEW M&H SUPPLY VALVE IN GRASS WITH 2'X2' SQUARE CONCRETE PAD AROUND VALVE BOX LID.
  3. REPLACE CONCRETE SIDEWALK SLABS.
  4. HYDRANT NOZZLE SHALL BE AT 45 DEGREE ANGLE TO CLARIFIER

VERIFY SCALE:  
BAR IS 1" IN  
ORIGINAL DRAWING

PROJECT #  
014-2020-001

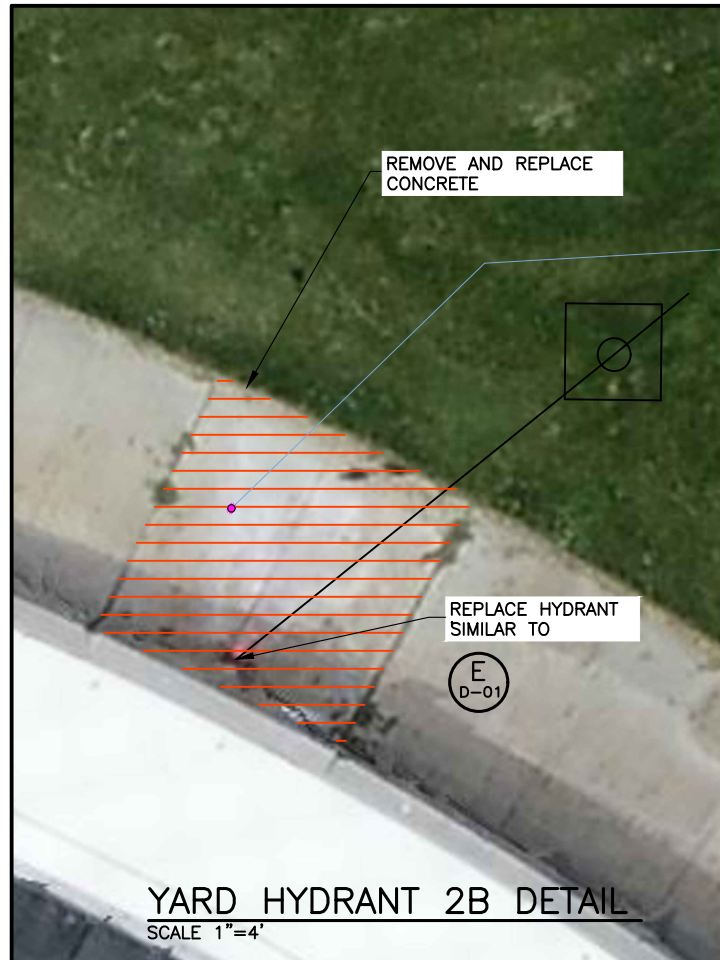
DATE: 08/10/2020

REVISION	DATE	DRAWN BY	CHECKED BY	DESCRIPTION
01	07/09/2020	R. SPRAGUE	J. OLDROYD	ADDENDUM 1 CLARIFICATIONS
BIDSET	06/29/2020	R. SPRAGUE	J. OLDROYD	

SWRF 2020 YARD PIPING IMPROVEMENTS PROJECT

**DETAILS 2**

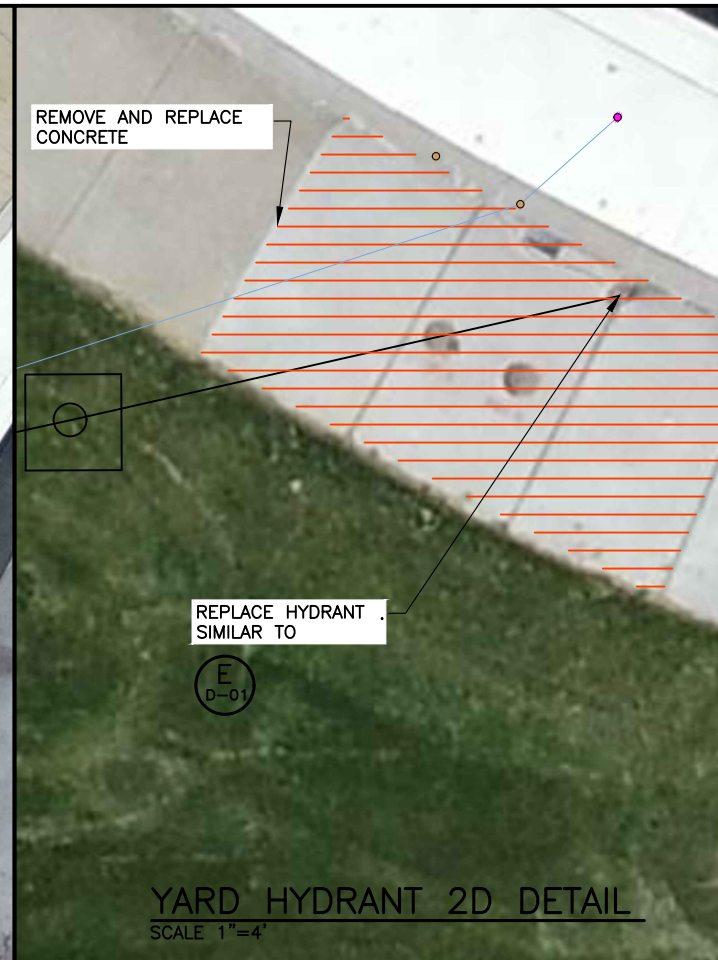
DRAWING  
D-02  
SHEET  
6 OF 8



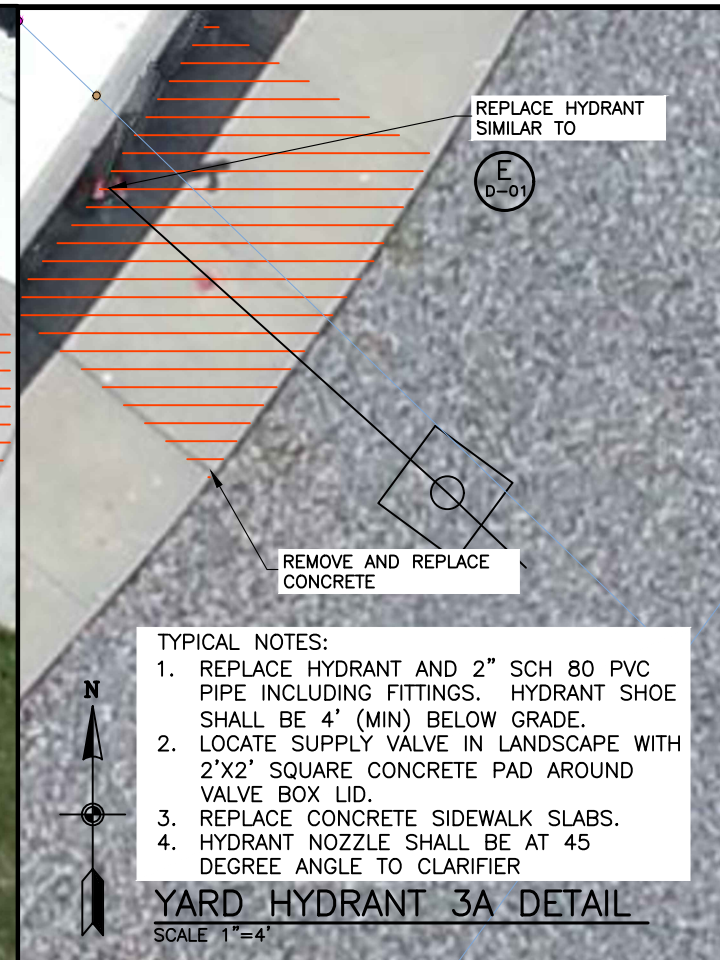
**YARD HYDRANT 2B DETAIL**  
SCALE 1"=4'



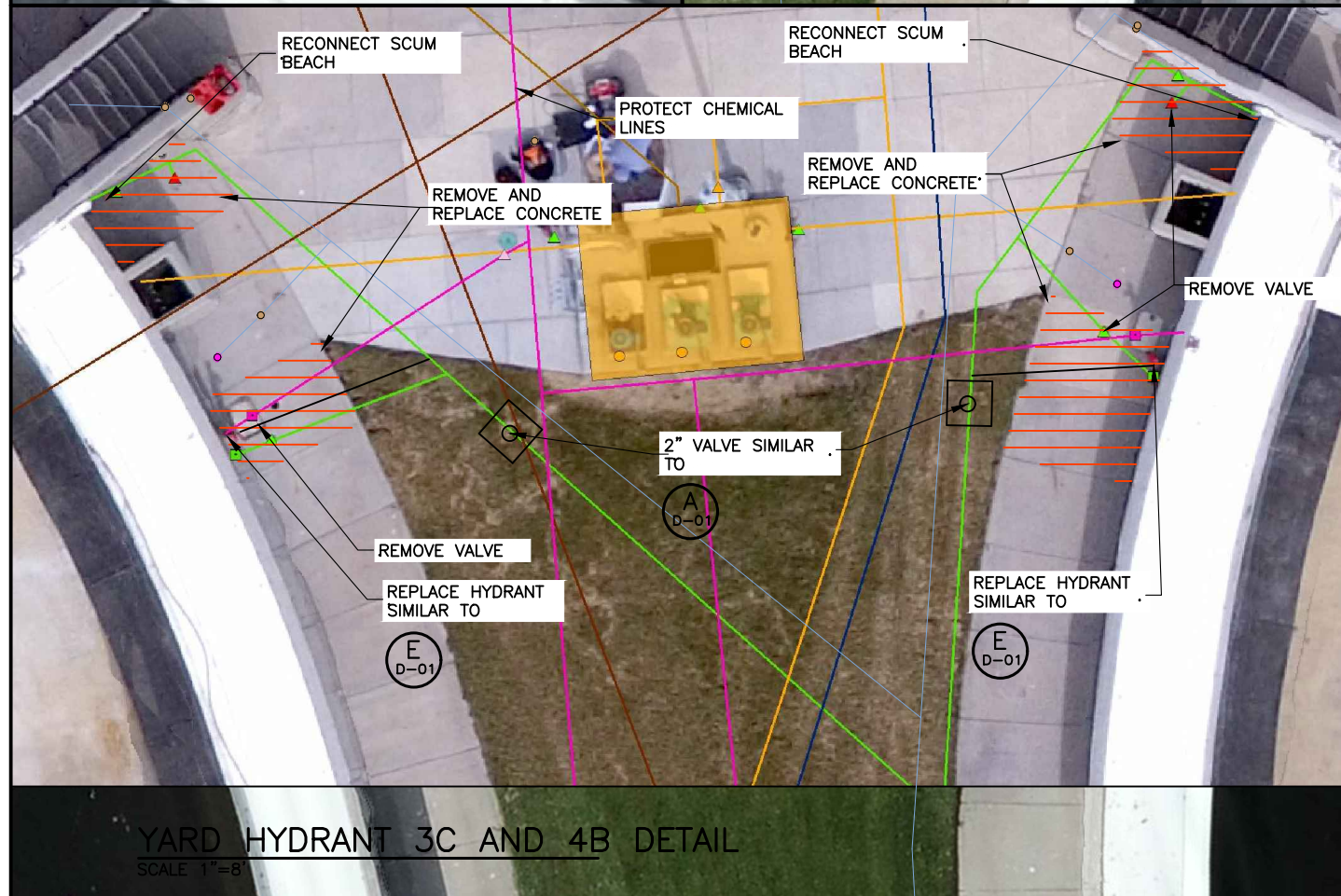
**YARD HYDRANT 2C DETAIL**  
SCALE 1"=8'



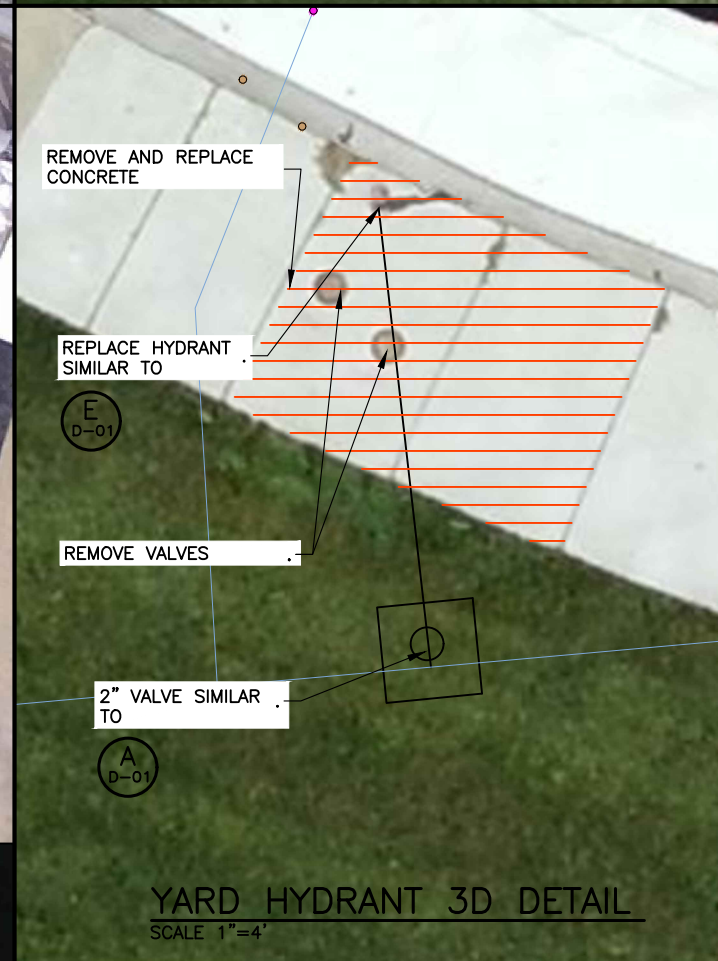
**YARD HYDRANT 2D DETAIL**  
SCALE 1"=4'



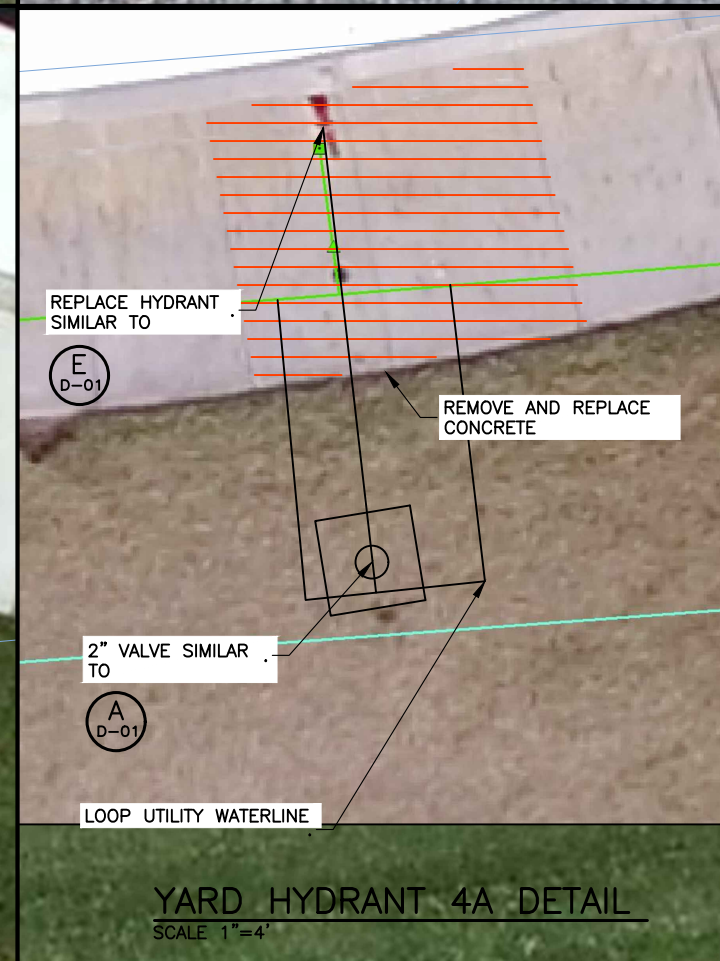
**YARD HYDRANT 3A DETAIL**  
SCALE 1"=4'



**YARD HYDRANT 3C AND 4B DETAIL**  
SCALE 1"=8'



**YARD HYDRANT 3D DETAIL**  
SCALE 1"=4'



**YARD HYDRANT 4A DETAIL**  
SCALE 1"=4'

VERIFY SCALE:  
BAR IS 1" IN ORIGINAL DRAWING

PROJECT #  
014-2020-001

DATE: 06/10/2020

REVISION	DATE	DRAWN BY	CHECKED BY	DESCRIPTION
01	07/09/2020	R. SPRAGUE	J. OLDROYD	ADDENDUM 1 CLARIFICATIONS
BIDSET	06/29/2020	R. SPRAGUE	J. OLDROYD	

SWRF 2020 YARD PIPING IMPROVEMENTS PROJECT

DETAILS 3

DRAWING

D-03

SHEET

7 OF 8