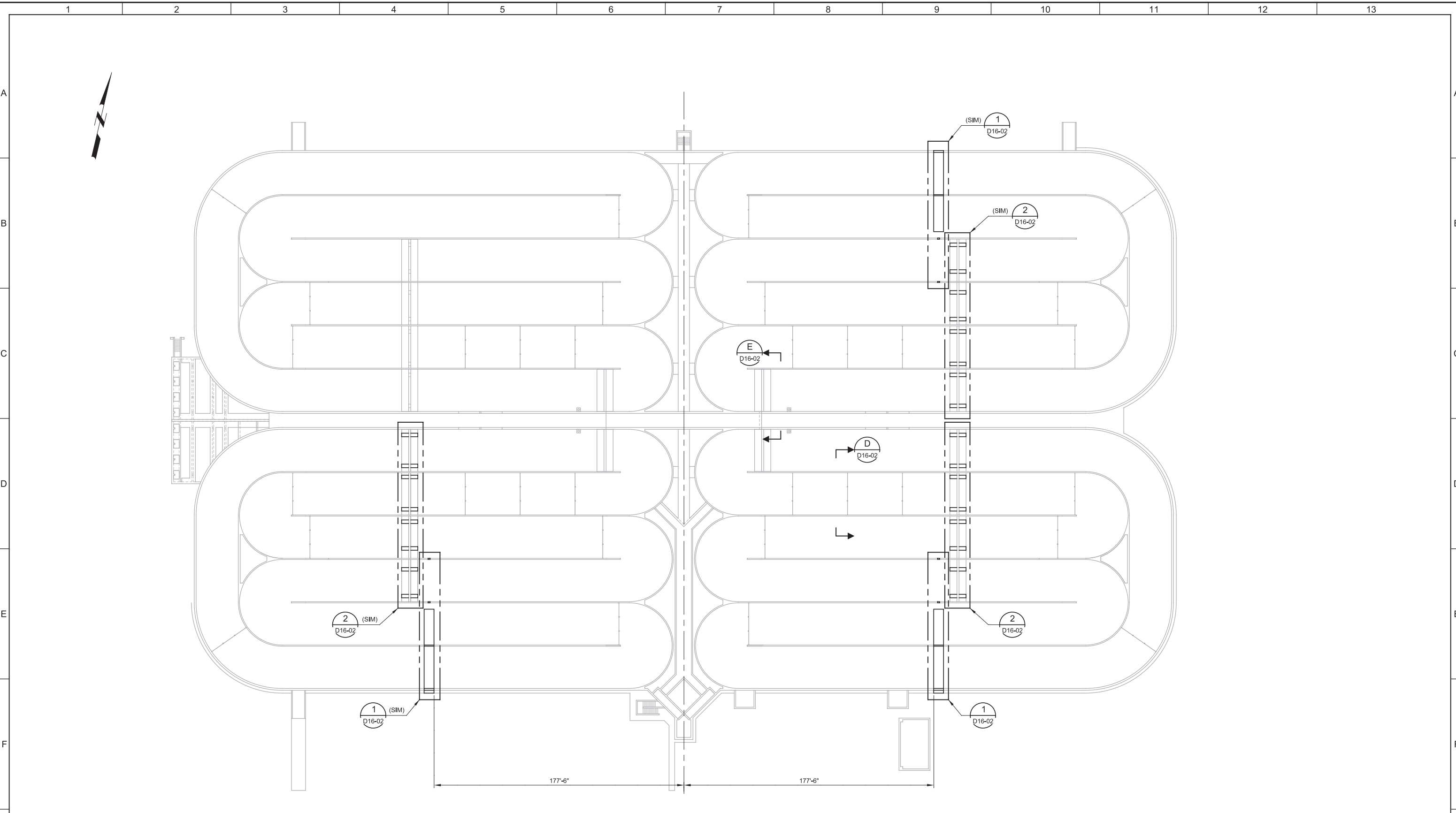


Plot Date: 26-FEB-2019 5:04:21 PM

User: svcPW

Model: Layout1 ColorTable: gshade.ctb DesignScript: Carollo_Sld_Pen_v0905.pen PlotScale: 2:1

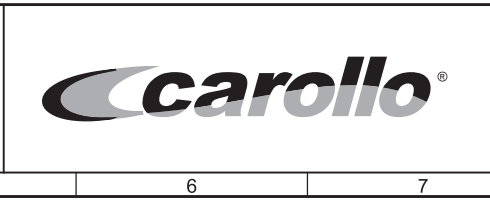
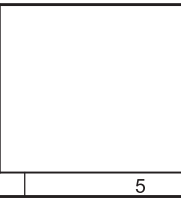
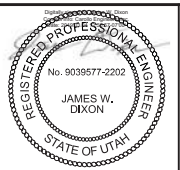
LAST SAVED BY: jefevre



A DEMOLITION PLAN
 SCALE: 1/32" = 1'-0"
 FILE: 10548A10_16S-9103

REV	DATE	BY	DESCRIPTION

DESIGNED
DCB
 DRAWN
DCS
 CHECKED
GLS
 DATE
MARCH 2019



SOUTH VALLEY WATER RECLAMATION FACILITY
PROJECT 5
 DEMOLITION
STRUCTURAL DEMOLITION PLAN

VERIFY SCALES
 BAR IS ONE INCH ON ORIGINAL DRAWING
 0 1"
 IF NOT ONE INCH ON THIS SHEET, ADJUST SCALES ACCORDINGLY

JOB NO.
10548A.10
 DRAWING NO.
D16-01
 SHEET NO.
38 OF 159

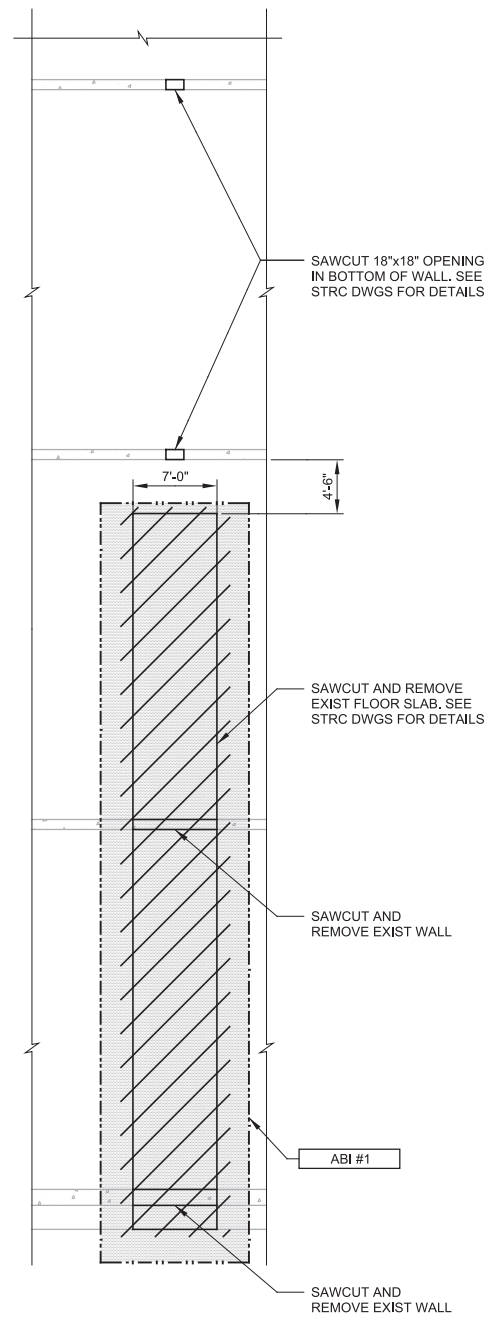
Plot Date: 28-FEB-2019 13:7:01 PM

User: svcBW

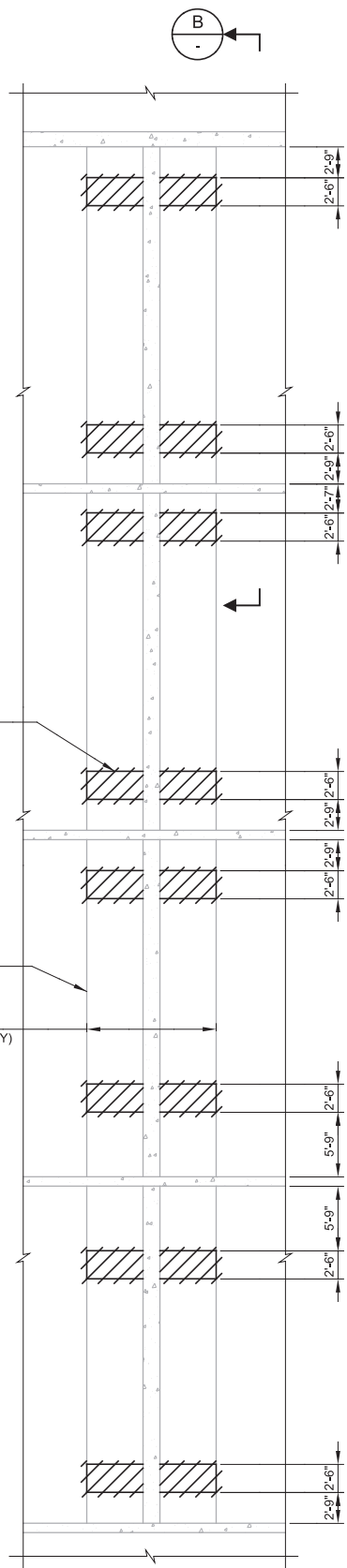
PlotScale: 2:1

LAST SAVED BY: stfunches

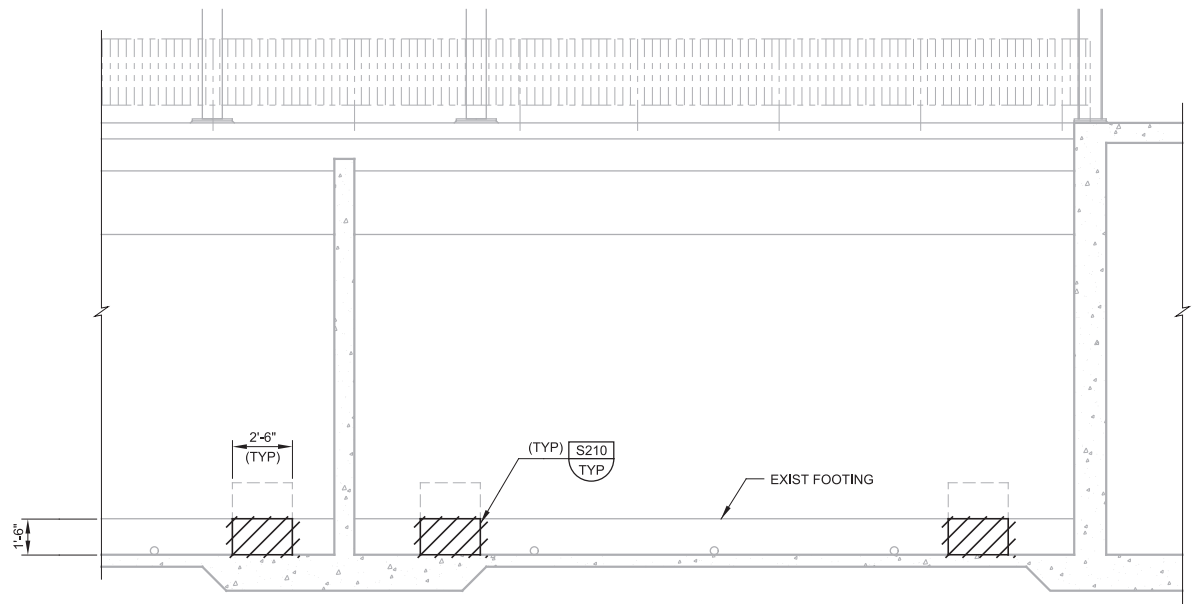
DENOTES ITEMS THAT ARE PART OF ALTERNATE BID ITEMS



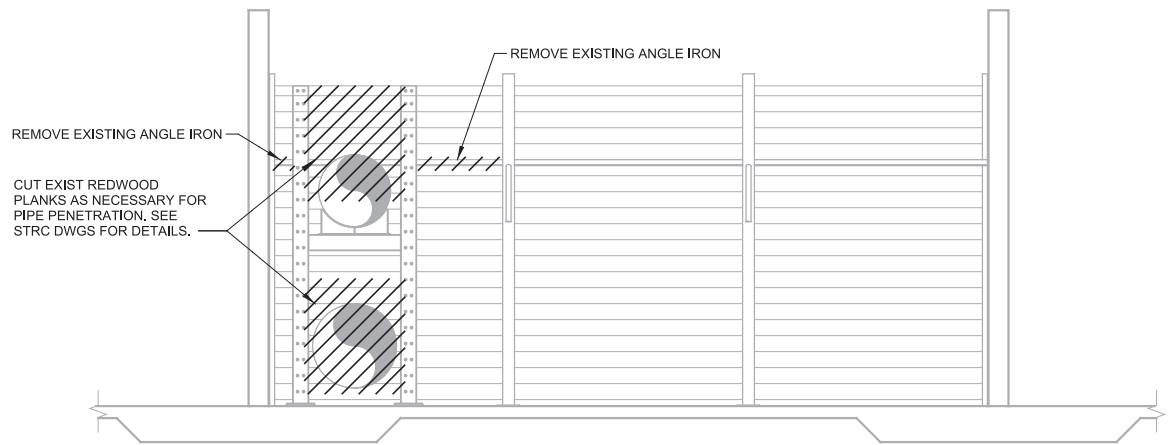
1 DETAIL
 D16-01 SCALE: 1/8" = 1'-0"
 FILE: 10548A10_16S-9103



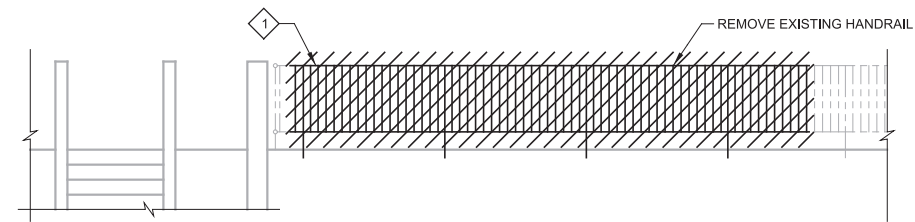
2 DETAIL
 D16-01 SCALE: 1/8" = 1'-0"
 FILE: 10548A10_16S-9103



B SECTION
 SCALE: 1/4" = 1'-0"
 FILE: 10548A10_16S-9301



D SECTION
 D16-01 SCALE: 1/4" = 1'-0"
 FILE: 10548A10S16306



E SECTION
 D16-01 SCALE: 1/4" = 1'-0"
 FILE: 10548A10S16304

GENERAL NOTES:
 1. FOR ALTERNATE BID ITEMS SEE SECTION 01230 (ALTERNATES)

KEY NOTES:
 1. DEMO EXISTING ELECTRICAL CONDUITS ATTACHED TO HANDRAIL. EXISTING ELECTRICAL EQUIPMENT STANDS WILL BE RELOCATED. REFER TO ELECTRICAL DRAWINGS FOR MORE DETAILS.

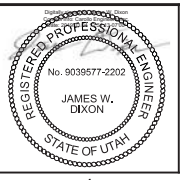
REV	DATE	BY	DESCRIPTION

DESIGNED
DCB

DRAWN
DCS

CHECKED
GLS

DATE
MARCH 2019



SV South Valley
 WATER RECLAMATION FACILITY

7495 South 1300 West
 West Jordan, Utah 84084

SOUTH VALLEY WATER RECLAMATION FACILITY

PROJECT 5
 DEMOLITION

BIOREACTORS
 STRUCTURAL DEMOLITION SECTIONS AND DETAILS

VERIFY SCALES
 BAR IS ONE INCH ON ORIGINAL DRAWING

0 1"

IF NOT ONE INCH ON THIS SHEET, ADJUST SCALES ACCORDINGLY

JOB NO.
10548A.10

DRAWING NO.
D16-02

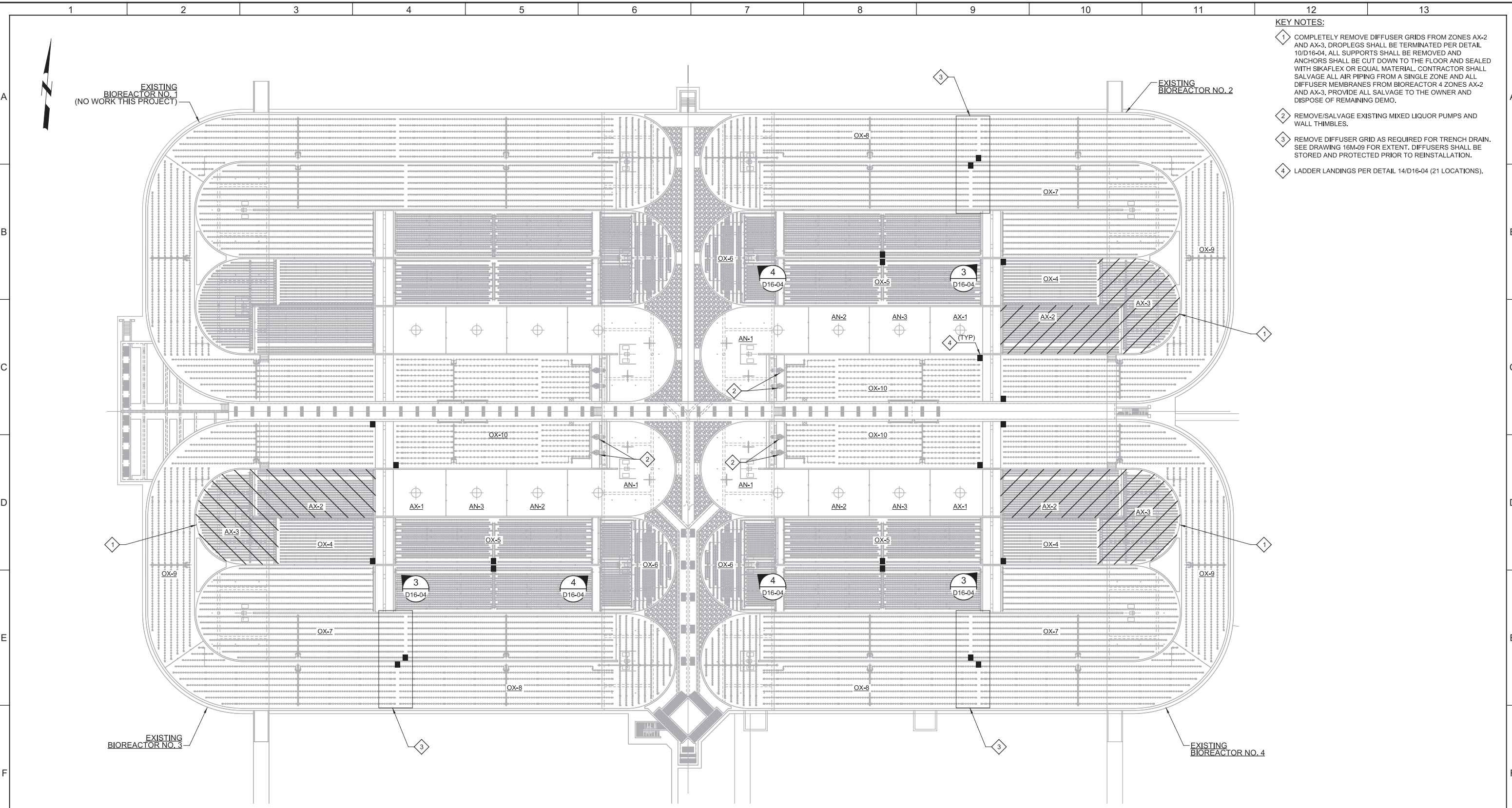
SHEET NO.
39 OF 159

Plot Date: 27-FEB-2019 1:26:42 PM

User: svcPW

Model: Layout1 ColorTable: gshade.ctb DesignScript: Carollo_Sld_Pen_v0905.pen PlotScale: 2:1

LAST SAVED BY: jscheele



- KEY NOTES:**
- 1 COMPLETELY REMOVE DIFFUSER GRIDS FROM ZONES AX-2 AND AX-3. DROPLEGS SHALL BE TERMINATED PER DETAIL 10/D16-04. ALL SUPPORTS SHALL BE REMOVED AND ANCHORS SHALL BE CUT DOWN TO THE FLOOR AND SEALED WITH SIKAFLEX OR EQUAL MATERIAL. CONTRACTOR SHALL SALVAGE ALL AIR PIPING FROM A SINGLE ZONE AND ALL DIFFUSER MEMBRANES FROM BIOREACTOR 4 ZONES AX-2 AND AX-3. PROVIDE ALL SALVAGE TO THE OWNER AND DISPOSE OF REMAINING DEMO.
 - 2 REMOVE/SALVAGE EXISTING MIXED LIQUOR PUMPS AND WALL THIMBLES.
 - 3 REMOVE DIFFUSER GRID AS REQUIRED FOR TRENCH DRAIN. SEE DRAWING 16M-09 FOR EXTENT. DIFFUSERS SHALL BE STORED AND PROTECTED PRIOR TO REINSTALLATION.
 - 4 LADDER LANDINGS PER DETAIL 14/D16-04 (21 LOCATIONS).

C OVERALL DEMOLITION PLAN
 SCALE: 1" = 30'
 FILE: 10548A10_16M-9101

REV	DATE	BY	DESCRIPTION
1			
2			
3			

DESIGNED
JD

DRAWN
KHB

CHECKED
GCS

DATE
MARCH 2019

SV South Valley
 WATER RECLAMATION FACILITY

7495 South 1300 West
 West Jordan, Utah 84084

SOUTH VALLEY WATER RECLAMATION FACILITY

PROJECT 5
 MECHANICAL

**BIOREACTORS
 MECHANICAL OVERALL DEMOLITION PLAN**

VERIFY SCALES
 BAR IS ONE INCH ON ORIGINAL DRAWING

0 1"

IF NOT ONE INCH ON THIS SHEET, ADJUST SCALES ACCORDINGLY

JOB NO.
10548A.10

DRAWING NO.
D16-03

SHEET NO.
40 OF 159

Plot Date: 26-FEB-2019 5:04:23 PM

User: svcPW

Model: Layout1 ColorTable: gshade.ctb DesignScript: Carollo_Std_Pen_v0905.pen PlotScale: 2:1

LAST SAVED BY: jefevre



3 DETAIL
16D-03 SCALE: NO SCALE
FILE: 10548A10M16420.JPG



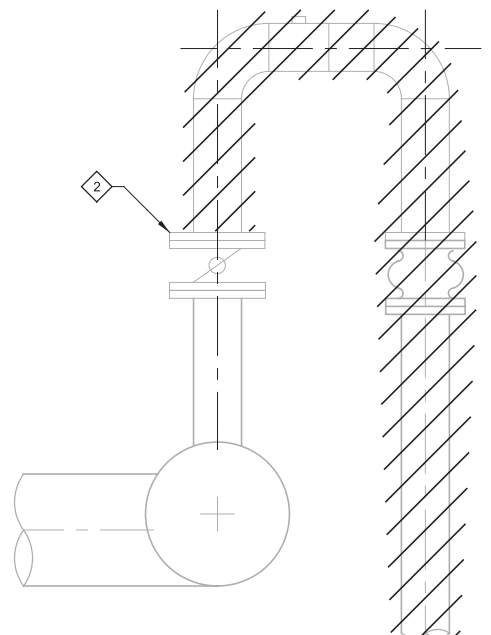
4 DETAIL
16D-03 SCALE: NO SCALE
FILE: 10548A10M16421.JPG

GENERAL NOTES:

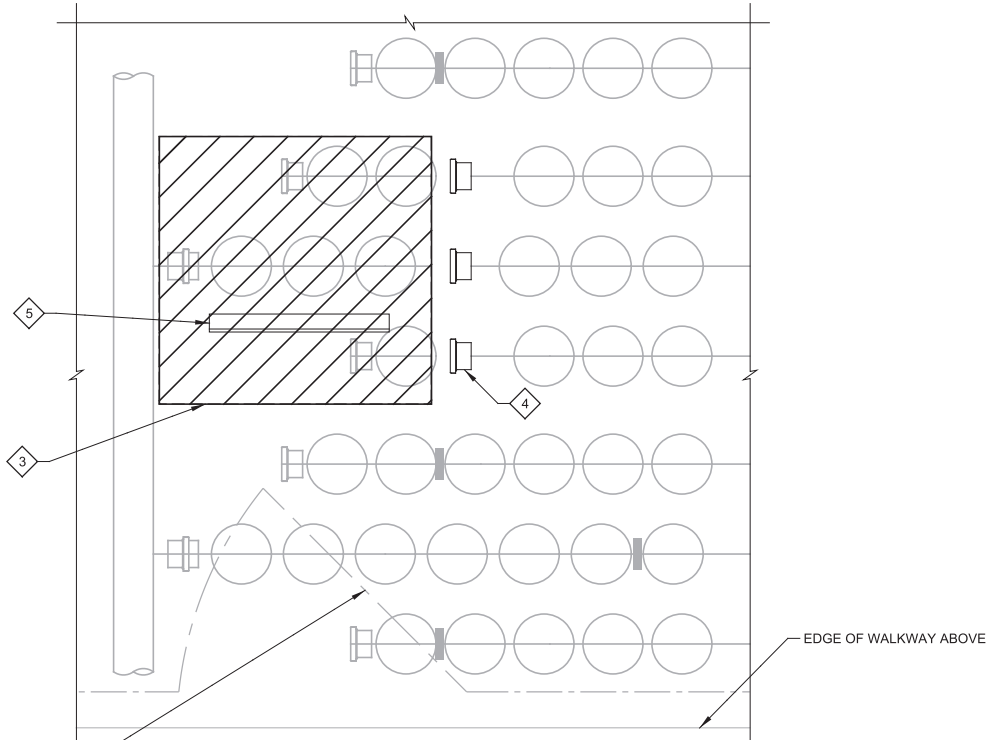
- 1. ALL IMPROVEMENTS NOTED HERE SHALL BE REQUIRED ON BIOREACTORS 2 THROUGH 4, UNLESS NOTED OTHERWISE.

KEY NOTES:

- 1 SEE M16-12 FOR INSTALLATION OF NEW EQUIPMENT.
- 2 INSTALL BLIND FLANGE DOWNSTREAM OF EXISTING BUTTERFLY VALVE (TYP OF 6 DROPLEGS).
- 3 REMOVE ALL DIFFUSERS AND SUPPORTS TO CREATE A 3'x3' CLEAR SPACE FOR LADDER LANDING. FIELD LOCATE WITH ENGINEER AT THE END OF AIR PIPING LATERALS TO MINIMIZE THE NUMBER OF DIFFUSERS REMOVED. FIELD LOCATE IN THE LANDING AREA TO PROVIDE AN APPROPRIATE LADDER ANGLE MEETING ALL OSHA LADDER REQUIREMENTS.
- 4 TERMINATE EXISTING PVC AIR PIPING OUTSIDE OF LANDING AREA WITH PVC CAPS.
- 5 INSTALL 2'-6" LONG SECTION OF L3x3x1/4 TYPE 316 SST FOR LADDER REST. ANCHOR WITH 3/4" SST ADHESIVE ANCHORS SPACED @ 9" AND EMBEDDED TO 3" DEPTH.



10 TYPICAL AX-2 & AX-3 DROP LEG TERMINATION DETAIL
16D-03 SCALE: NO SCALE
FILE: 10548A10M16320

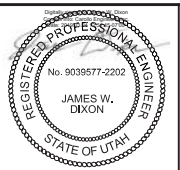


NEW GATE IN EXISTING HANDRAIL. SEE STRC DRAWINGS FOR DETAILS AND APPROXIMATE LOCATIONS

14 LADDER LANDING DETAIL
16D-03 SCALE: NO SCALE
FILE: 10548A10M16403

REV	DATE	BY	DESCRIPTION

DESIGNED
JD
DRAWN
MM
CHECKED
GCS
DATE
MARCH 2019



SV South Valley
WATER RECLAMATION FACILITY
7495 South 1300 West
West Jordan, Utah 84084

SOUTH VALLEY WATER RECLAMATION FACILITY
PROJECT 5
DEMOLITION
BIOREACTORS
MECHANICAL DEMOLITION DETAILS

VERIFY SCALES
BAR IS ONE INCH ON ORIGINAL DRAWING
0 1"
IF NOT ONE INCH ON THIS SHEET, ADJUST SCALES ACCORDINGLY

JOB NO.
10548A.10
DRAWING NO.
D16-04
SHEET NO.
41 OF 159

Plot Date: 01-MAR-2019 8:10:05 AM

User: svcPW

Plot Scale: 2:1

Model: Layout1

ColorTable: gshade.ctb

DesignScript: Carollo_Sld_Pen_v0905.pen

1 2 3 4 5 6 7 8 9 10 11 12 13

A

B

C

D

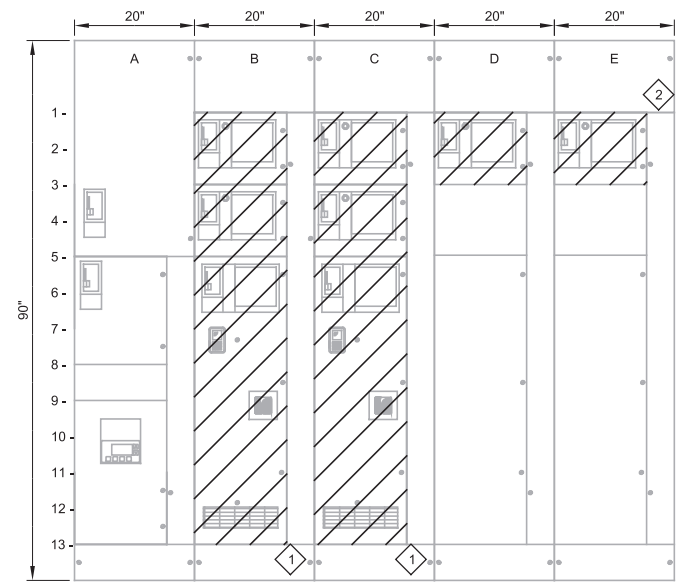
E

F

G

KEY NOTES:

- 1 REMOVE THE EXISTING VFDS FROM BR-MCC-2 AND REINSTALL INTO THE SPACES IN BR-MCC-1 FOR USE AS SPARES. PROVIDE NEW COMPARTMENT DOORS.
- 2 REMOVE THE EXISTING STARTERS AND DISPOSE OF OFF SITE.



A1- MAIN CB	B1- BIOREACTOR 2 SHAFT MIXER BRXA-602	C1- BIOREACTOR 2 SHAFT MIXER BRXB-602	D1- BIOREACTOR 2 FLOATING MIXER BRXC-602	E1- BIOREACTOR 2 FLOATING MIXER BRXD-602
A5- LP-MCC-BR	B3- BIOREACTOR 2 FLOATING MIXER BRXE-602	C3- BIOREACTOR 2 FLOATING MIXER BRXF-602	D3- SPACE	E3- SPACE
A8- SPACE	B5- BIOREACTOR 2 INTERNAL RECYCLE PUMP PMRA-602	C5- BIOREACTOR 2 INTERNAL RECYCLE PUMP PMPB-602	D5- SPACE	E5- SPACE
A9- TVSS				

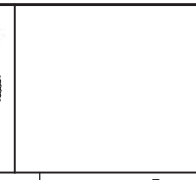
REV	DATE	BY	DESCRIPTION
1			
2			
3			

DESIGNED
CAC

DRAWN
AAW

CHECKED
BJR

DATE
MARCH 2019



SOUTH VALLEY WATER RECLAMATION FACILITY

PROJECT 5

DEMOLITION

BR-MCC-2
ELEVATION

VERIFY SCALES

BAR IS ONE INCH ON ORIGINAL DRAWING

0 1"

IF NOT ONE INCH ON THIS SHEET, ADJUST SCALES ACCORDINGLY

JOB NO.
10548A.10

DRAWING NO.
D-OL-BR-1

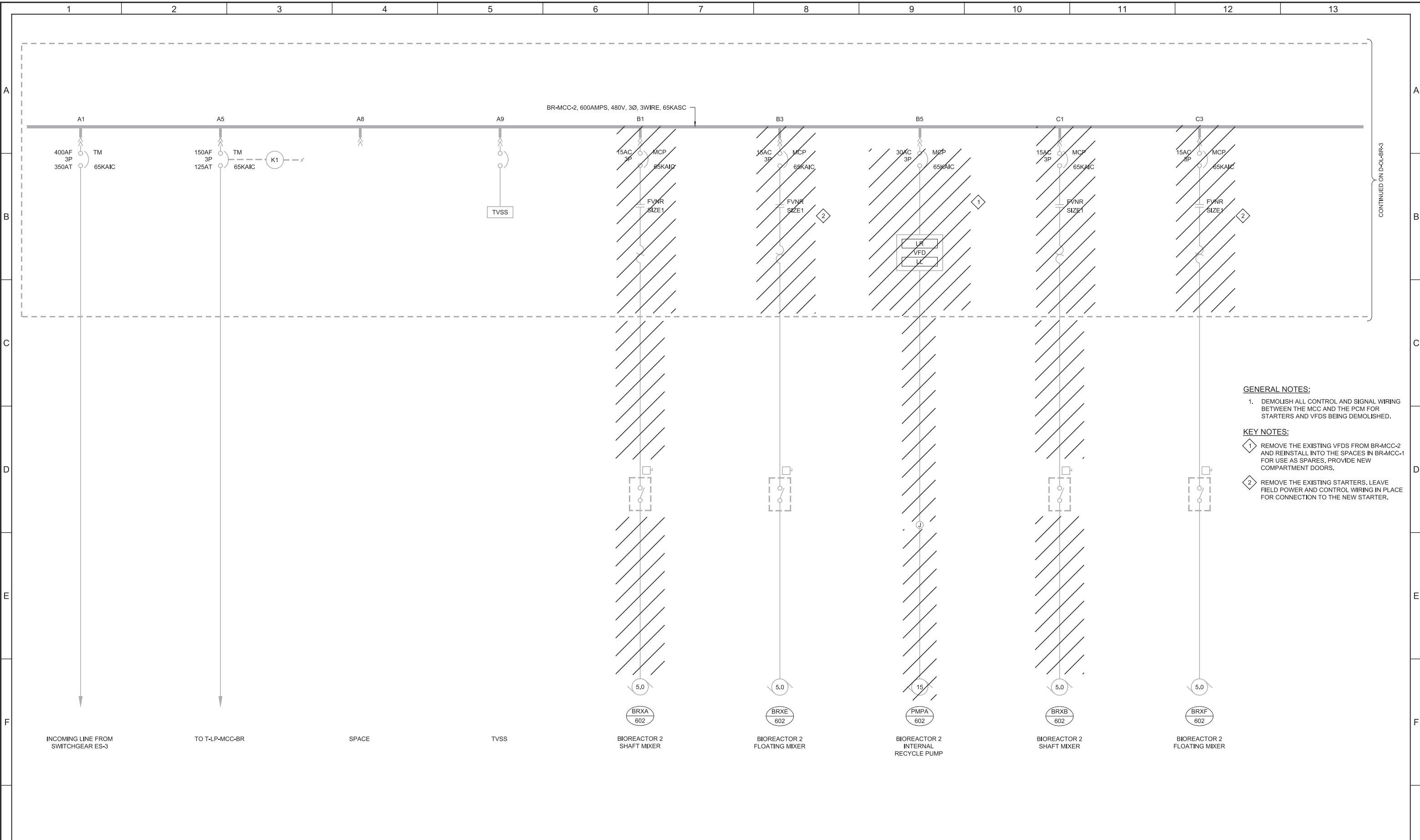
SHEET NO.
42 OF 159

Plot Date: 01-MAR-2019 8:10:08 AM

User: svcPW

Model: Layout1 ColorTable: gshade.ctb DesignScript: Carollo_Std_Pen_v0905.pen PlotScale: 2:1

LAST SAVED BY: jfevre



CONTINUED ON D-OL-BR-3

- GENERAL NOTES:**
- DEMOLISH ALL CONTROL AND SIGNAL WIRING BETWEEN THE MCC AND THE PCM FOR STARTERS AND VFDS BEING DEMOLISHED.
- KEY NOTES:**
- REMOVE THE EXISTING VFDS FROM BR-MCC-2 AND REINSTALL INTO THE SPACES IN BR-MCC-1 FOR USE AS SPARES, PROVIDE NEW COMPARTMENT DOORS.
 - REMOVE THE EXISTING STARTERS. LEAVE FIELD POWER AND CONTROL WIRING IN PLACE FOR CONNECTION TO THE NEW STARTER.

REV	DATE	BY	DESCRIPTION
1			
2			
3			

DESIGNED
CAC

DRAWN
AAW

CHECKED
BJR

DATE
MARCH 2019

REGISTERED PROFESSIONAL ENGINEER
No. 366286
CHRISTOPHER A. CARVALHO
STATE OF UTAH

SV South Valley
WATER RECLAMATION FACILITY

7495 South 1300 West
West Jordan, Utah 84084

SOUTH VALLEY WATER RECLAMATION FACILITY

PROJECT 5

DEMOLITION

BR-MCC-2

ONE-LINE DIAGRAM - I

VERIFY SCALES

BAR IS ONE INCH ON ORIGINAL DRAWING

0 1"

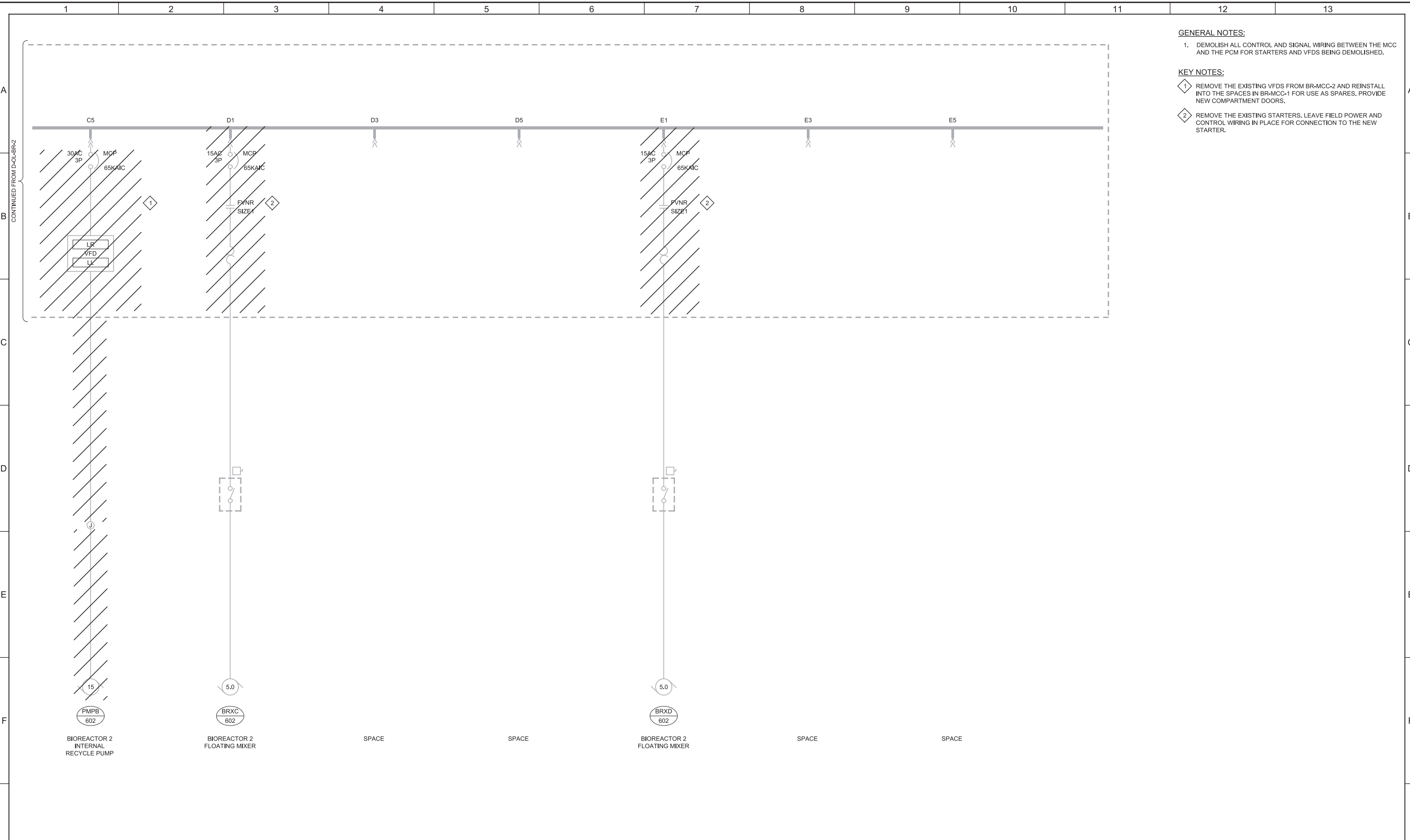
IF NOT ONE INCH ON THIS SHEET, ADJUST SCALES ACCORDINGLY

JOB NO.
10548A.10

DRAWING NO.
D-OL-BR-2

SHEET NO.
43 OF 159

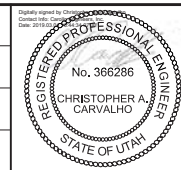
Plot Date: 28-FEB-2019 2:41:58 PM
 User: svcPW
 Model: Layout1 ColorTable: gshade.ctb DesignScript: Carollo_Sld_Pen_v0905.pen PlotScale: 2:1
 LAST SAVED BY: jefevre



- GENERAL NOTES:**
- DEMOLISH ALL CONTROL AND SIGNAL WIRING BETWEEN THE MCC AND THE PCM FOR STARTERS AND VFDS BEING DEMOLISHED.
- KEY NOTES:**
- REMOVE THE EXISTING VFDS FROM BR-MCC-2 AND REINSTALL INTO THE SPACES IN BR-MCC-1 FOR USE AS SPARES. PROVIDE NEW COMPARTMENT DOORS.
 - REMOVE THE EXISTING STARTERS. LEAVE FIELD POWER AND CONTROL WIRING IN PLACE FOR CONNECTION TO THE NEW STARTER.

REV	DATE	BY	DESCRIPTION
1			
2			
3			

DESIGNED
CAC
 DRAWN
AAW
 CHECKED
BJR
 DATE
MARCH 2019



SV South Valley
 WATER RECLAMATION FACILITY
 7495 South 1300 West
 West Jordan, Utah 84084

SOUTH VALLEY WATER RECLAMATION FACILITY		VERIFY SCALES	JOB NO. 10548A.10
PROJECT 5		BAR IS ONE INCH ON ORIGINAL DRAWING	DRAWING NO. D-OL-BR-3
DEMOLITION		0 1"	SHEET NO. 44 OF 159
BR-MCC-2		IF NOT ONE INCH ON THIS SHEET, ADJUST SCALES ACCORDINGLY	
ONE-LINE DIAGRAM - II			

Plot Date: 01-MAR-2019 8:10:07 AM

User: svcPW

Plot Scale: 2:1

Model: Layout1

ColorTable: gshade.ctb

LAST SAVED BY: stfunches

1 2 3 4 5 6 7 8 9 10 11 12 13

A

B

C

D

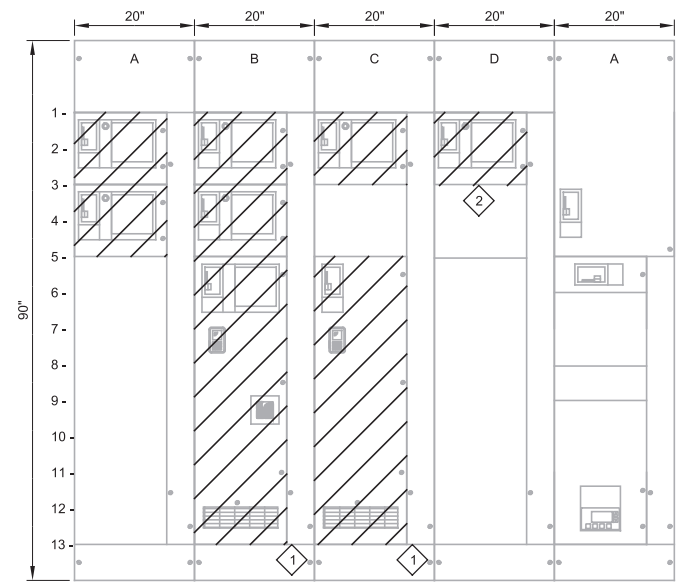
E

F

G

KEY NOTES:

- 1 REMOVE THE EXISTING VFDS FROM BR-MCC-3 AND DISPOSE OF OFF-SITE. PROVIDE NEW COMPARTMENT DOORS.
- 2 REMOVE THE EXISTING STARTERS AND DISPOSE OF OFF SITE.



- A1- BIOREACTOR 3 SHAFT MIXER BRXA-603
- B1- BIOREACTOR 3 SHAFT MIXER BRXB-603
- C1- BIOREACTOR 3 FLOATING MIXER BRXC-603
- D1- BIOREACTOR 3 FLOATING MIXER BRXD-603
- E1- MAIN CB
- A2- BIOREACTOR 3 FLOATING MIXER BRXE-603
- B2- BIOREACTOR 3 FLOATING MIXER BRXF-603
- C3- SPACE
- D3- SPACE
- E5- SPARE
- A5- SPACE
- B5- BIOREACTOR 3 INTERNAL RECYCLE PUMP PMPA-603
- C5- BIOREACTOR 3 INTERNAL RECYCLE PUMP PMPB-603
- D5- SPACE
- E6- SPACE
- E8- SPACE
- E9- TVSS

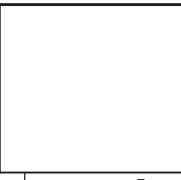
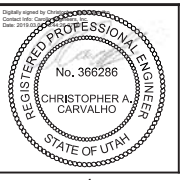
REV	DATE	BY	DESCRIPTION
1			
2			
3			

DESIGNED
CAC

DRAWN
AAW

CHECKED
BJR

DATE
MARCH 2019



SOUTH VALLEY WATER RECLAMATION FACILITY

PROJECT 5

DEMOLITION

BR-MCC-3

ELEVATION

VERIFY SCALES

BAR IS ONE INCH ON ORIGINAL DRAWING

0 1"

IF NOT ONE INCH ON THIS SHEET, ADJUST SCALES ACCORDINGLY

JOB NO.
10548A.10

DRAWING NO.
D-OL-BR-4

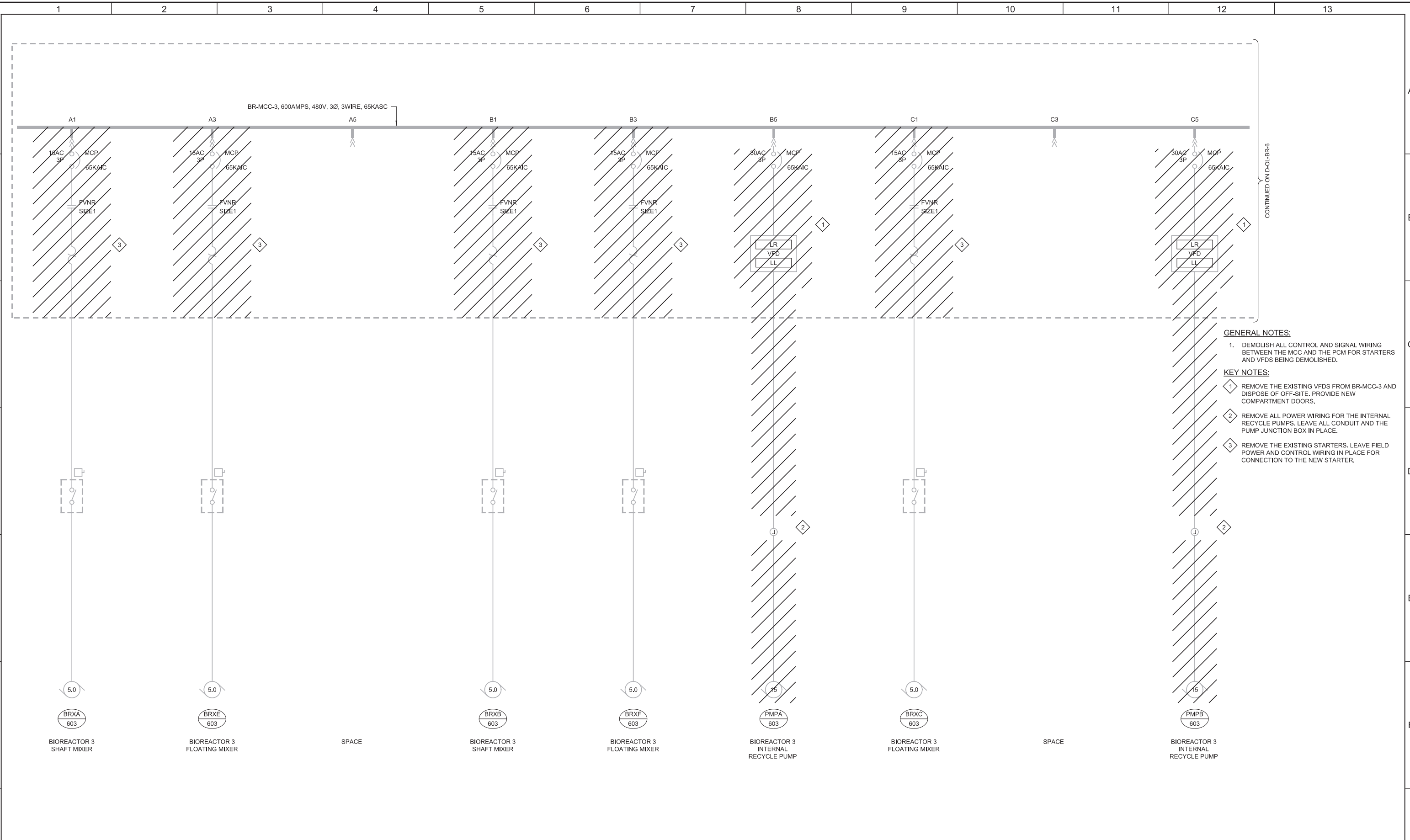
SHEET NO.
45 OF 159

Plot Date: 28-FEB-2019 2:41:58 PM

User: svcBW

PlotScale: 2:1

LAST SAVED BY: jefevre



CONTINUED ON D-OL-BR-6

- GENERAL NOTES:**
1. DEMOLISH ALL CONTROL AND SIGNAL WIRING BETWEEN THE MCC AND THE PCM FOR STARTERS AND VFDS BEING DEMOLISHED.
- KEY NOTES:**
1. REMOVE THE EXISTING VFDS FROM BR-MCC-3 AND DISPOSE OF OFF-SITE. PROVIDE NEW COMPARTMENT DOORS.
 2. REMOVE ALL POWER WIRING FOR THE INTERNAL RECYCLE PUMPS. LEAVE ALL CONDUIT AND THE PUMP JUNCTION BOX IN PLACE.
 3. REMOVE THE EXISTING STARTERS. LEAVE FIELD POWER AND CONTROL WIRING IN PLACE FOR CONNECTION TO THE NEW STARTER.

REV	DATE	BY	DESCRIPTION
1			
2			
3			

DESIGNED
CAC

DRAWN
AAW

CHECKED
BJR

DATE
MARCH 2019



SV South Valley
WATER RECLAMATION FACILITY

7495 South 1300 West
West Jordan, Utah 84084

SOUTH VALLEY WATER RECLAMATION FACILITY

PROJECT 5

DEMOLITION

BR-MCC-3

ONE-LINE DIAGRAM - I

VERIFY SCALES
BAR IS ONE INCH ON ORIGINAL DRAWING
0 1"

IF NOT ONE INCH ON THIS SHEET, ADJUST SCALES ACCORDINGLY

JOB NO.
10548A.10

DRAWING NO.
D-OL-BR-5

SHEET NO.
46 OF 159

Plot Date: 01-MAR-2019 8:10:06 AM

User: svcPW

Plot Scale: 2:1

Model: Layout1

ColorTable: gshade.ctb

ColorTable: gshade.ctb

1 2 3 4 5 6 7 8 9 10 11 12 13

A

B

C

D

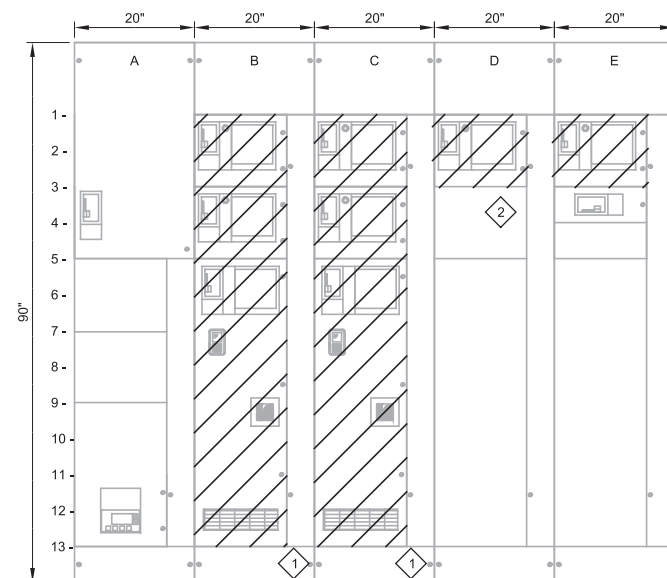
E

F

G

KEY NOTES:

- 1 REMOVE THE EXISTING VFDS FROM BR-MCC-4 AND DISPOSE OF OFF-SITE. PROVIDE NEW COMPARTMENT DOORS.
- 2 REMOVE THE EXISTING STARTERS AND DISPOSE OF OFF SITE.



A1- MAIN CB	B1- BIOREACTOR 4 SHAFT MIXER BRXA-604	C1- BIOREACTOR 4 SHAFT MIXER BRXB-604	D1- BIOREACTOR 4 FLOATING MIXER BRXC-604	E1- BIOREACTOR 4 FLOATING MIXER BRXD-604
A5- SPACE	B3- BIOREACTOR 4 FLOATING MIXER BRXE-604	C3- BIOREACTOR 4 FLOATING MIXER BRXF-604	D3- SPACE	E3- SPARE
A7- SPACE	B6- BIOREACTOR 4 INTERNAL RECYCLE PUMP PMPA-604	C6- BIOREACTOR 4 INTERNAL RECYCLE PUMP PMPB-604	D5- SPACE	E4- SPACE
A9- TVSS				E5- SPACE

REV	DATE	BY	DESCRIPTION
1			
2			
3			

DESIGNED
CAC

DRAWN
AAW

CHECKED
BJR

DATE
MARCH 2019



SOUTH VALLEY WATER RECLAMATION FACILITY

PROJECT 5

DEMOLITION

BR-MCC-4
ELEVATION

VERIFY SCALES

BAR IS ONE INCH ON ORIGINAL DRAWING

0 1"

IF NOT ONE INCH ON THIS SHEET, ADJUST SCALES ACCORDINGLY

JOB NO.
10548A.10

DRAWING NO.
D-OL-BR-7

SHEET NO.
48 OF 159

Plot Date: 01-MAR-2019 8:10:07 AM

User: svcPW

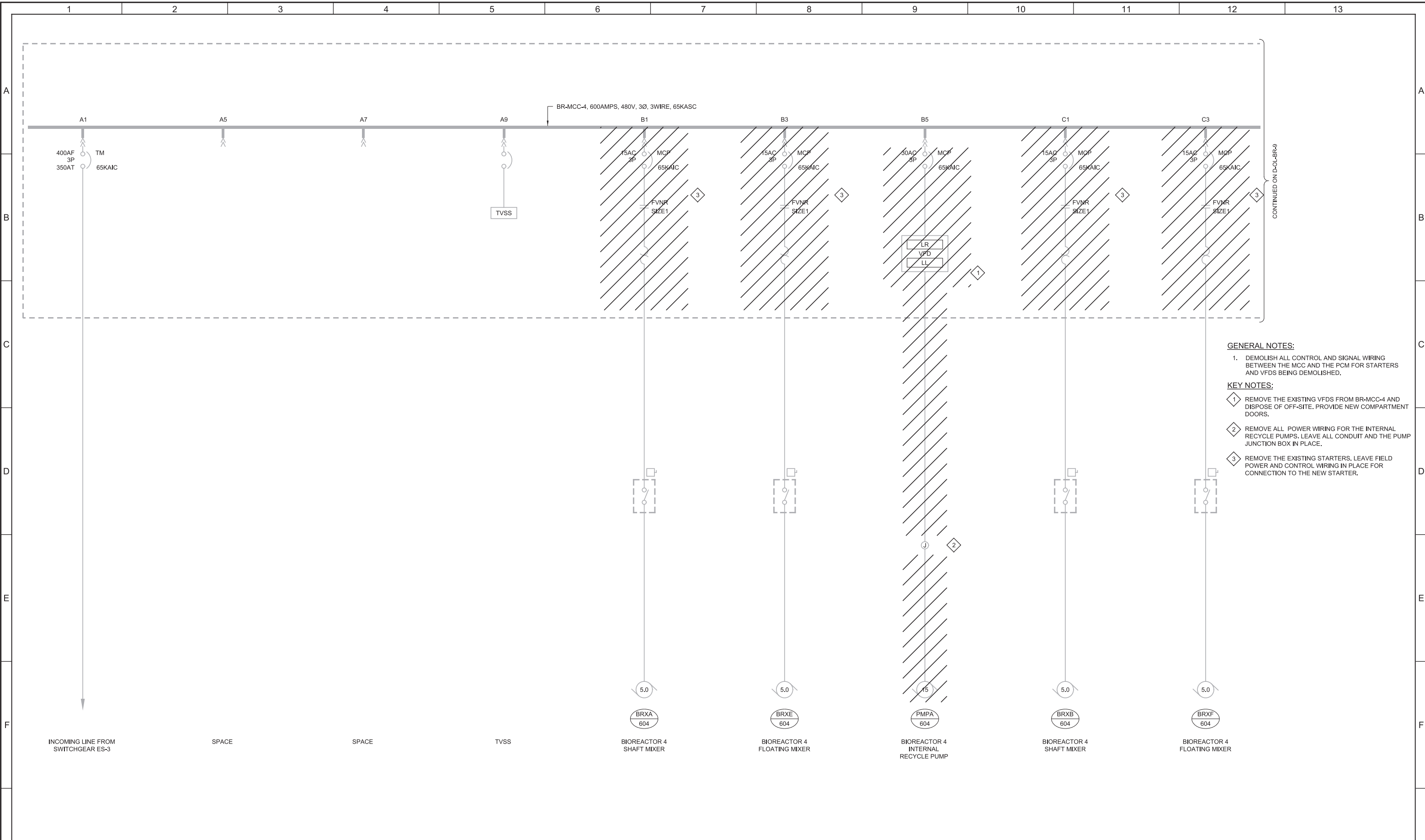
Model: Layout1

ColorTable: gshade.ctb

DesignScript: Carollo_Sld_Pen_v0905.pen

PlotScale: 2:1

LAST SAVED BY: sfunches



- GENERAL NOTES:**
- DEMOLISH ALL CONTROL AND SIGNAL WIRING BETWEEN THE MCC AND THE PCM FOR STARTERS AND VFDS BEING DEMOLISHED.
- KEY NOTES:**
- REMOVE THE EXISTING VFDS FROM BR-MCC-4 AND DISPOSE OF OFF-SITE. PROVIDE NEW COMPARTMENT DOORS.
 - REMOVE ALL POWER WIRING FOR THE INTERNAL RECYCLE PUMPS. LEAVE ALL CONDUIT AND THE PUMP JUNCTION BOX IN PLACE.
 - REMOVE THE EXISTING STARTERS. LEAVE FIELD POWER AND CONTROL WIRING IN PLACE FOR CONNECTION TO THE NEW STARTER.

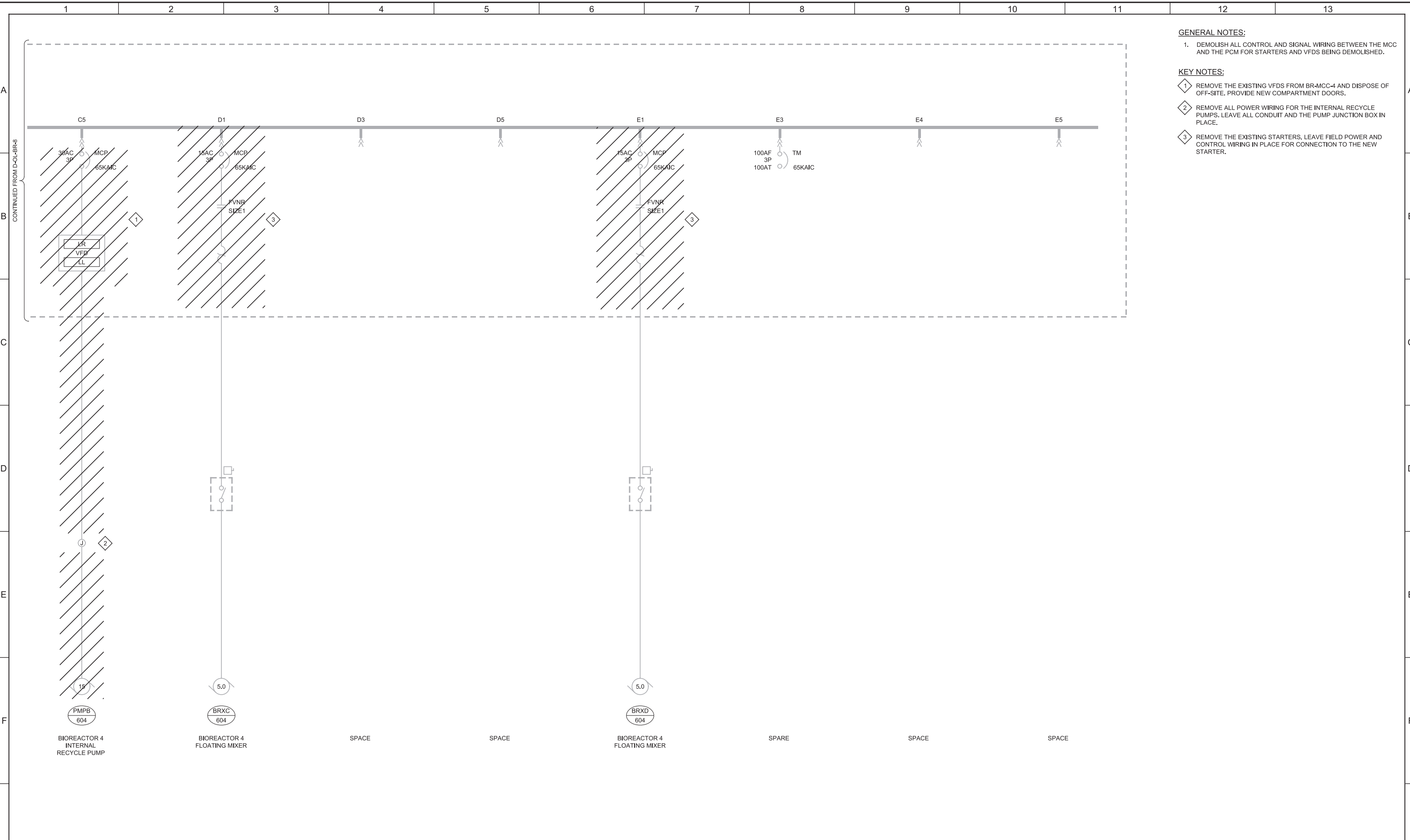
DESIGNED CAC					SOUTH VALLEY WATER RECLAMATION FACILITY			VERIFY SCALES	JOB NO. 10548A.10							
DRAWN AAW					PROJECT 5			BAR IS ONE INCH ON ORIGINAL DRAWING	DRAWING NO. D-OL-BR-8							
CHECKED BJR					DEMOLITION			0 1"	SHEET NO.							
DATE MARCH 2019					BR-MCC-4 ONE-LINE DIAGRAM - I			IF NOT ONE INCH ON THIS SHEET, ADJUST SCALES ACCORDINGLY	49 OF 159							
REV	DATE	BY	DESCRIPTION	1	2	3	4	5	6	7	8	9	10	11	12	13

Plot Date: 26-FEB-2019 5:04:18 PM

User: svcPW

Plot Scale: 2:1

LAST SAVED BY: jefevre



- GENERAL NOTES:**
1. DEMOLISH ALL CONTROL AND SIGNAL WIRING BETWEEN THE MCC AND THE PCM FOR STARTERS AND VFDS BEING DEMOLISHED.
- KEY NOTES:**
- 1 REMOVE THE EXISTING VFDS FROM BR-MCC-4 AND DISPOSE OF OFF-SITE. PROVIDE NEW COMPARTMENT DOORS.
 - 2 REMOVE ALL POWER WIRING FOR THE INTERNAL RECYCLE PUMPS. LEAVE ALL CONDUIT AND THE PUMP JUNCTION BOX IN PLACE.
 - 3 REMOVE THE EXISTING STARTERS. LEAVE FIELD POWER AND CONTROL WIRING IN PLACE FOR CONNECTION TO THE NEW STARTER.

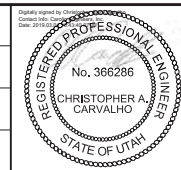
REV	DATE	BY	DESCRIPTION

DESIGNED
CAC

DRAWN
AAW

CHECKED
BJR

DATE
MARCH 2019



SV South Valley
WATER RECLAMATION FACILITY

7495 South 1300 West
West Jordan, Utah 84084

SOUTH VALLEY WATER RECLAMATION FACILITY		VERIFY SCALES	JOB NO. 10548A.10
PROJECT 5		BAR IS ONE INCH ON ORIGINAL DRAWING	DRAWING NO. D-OL-BR-9
DEMOLITION		0 1"	SHEET NO. 50 OF 159
BR-MCC-4		IF NOT ONE INCH ON THIS SHEET, ADJUST SCALES ACCORDINGLY	
ONE-LINE DIAGRAM - II			